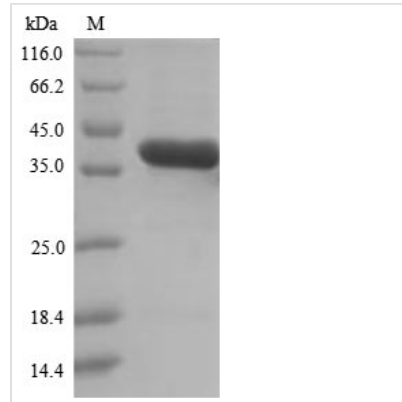




Recombinant Mouse Glutaminyl-peptide cyclotransferase (Qpct)

Product Code	CSB-YP019135MO
Relevance	Responsible for the biosynthesis of pyroglutamyl peptides. Has a bias against acidic and tryptophan residues adjacent to the N-terminal glutaminyl residue and a lack of importance of chain length after the second residue
Abbreviation	Recombinant Mouse Qpct protein
Storage	The shelf life is related to many factors, storage state, buffer ingredients, storage temperature and the stability of the protein itself. Generally, the shelf life of liquid form is 6 months at -20°C/-80°C. The shelf life of lyophilized form is 12 months at -20°C/-80°C.
Uniprot No.	Q9CYK2
Product Type	Recombinant Protein
Immunogen Species	Mus musculus (Mouse)
Purity	≥ 90% as determined by SDS-PAGE.
Sequence	AWTQEKNHHQPAHLNSSLQQVAEGTSISEMWQNDLRPLLIERYPGSPGSYS ARQHIMQRIQRLQAEWVVEVDTFLSRTPYGYRSFSNIISTLNPEAKRHLVLACH YDSKYFPRWDSRVFVGATDSAVPCAMMLELARALDKKLHSLKDVSGSKPDLS LRLIFFDGEEAFHHWSPQDSLYGSRHLAQKMASSPHPPGSRGTNQLDGMDDL VLLDLIGAANPTFPNFFPKTTRWFNRLQAI EKELYELGLLKDHSLEKRYFQNF YGNIIQDDHIPFLRKGVPVLHLIASPFPEVWHTMDDNEENLHASTIDNLNKIIQVF VLEYLHL
Research Area	Neuroscience
Source	Yeast
Target Names	Qpct
Protein Names	Glutaminyl cyclase
Expression Region	36-362aa
Notes	Repeated freezing and thawing is not recommended. Store working aliquots at 4°C for up to one week.
Tag Info	N-terminal 6xHis-tagged
Mol. Weight	39.6kDa
Protein Length	Full Length of Mature Protein
Image	



(Tris-Glycine gel) Discontinuous SDS-PAGE (reduced) with 5% enrichment gel and 15% separation gel.

Reconstitution

We recommend that this vial be briefly centrifuged prior to opening to bring the contents to the bottom. Please reconstitute protein in deionized sterile water to a concentration of 0.1-1.0 mg/mL. We recommend to add 5-50% of glycerol (final concentration) and aliquot for long-term storage at -20°C/-80°C. Our default final concentration of glycerol is 50%. Customers could use it as reference.

Shelf Life

The shelf life is related to many factors, storage state, buffer ingredients, storage temperature and the stability of the protein itself. Generally, the shelf life of liquid form is 6 months at -20°C/-80°C. The shelf life of lyophilized form is 12 months at -20°C/-80°C.