



Recombinant Human Kelch-like ECH-associated protein 1 (KEAP1)

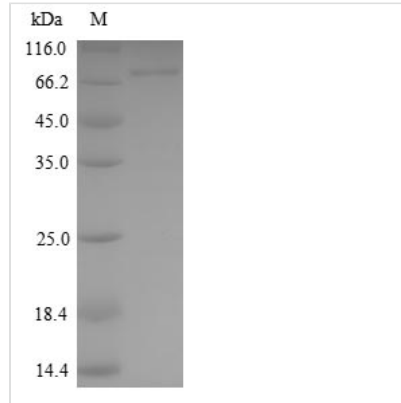
Product Code	CSB-YP012147HU
Relevance	Acts as a substrate adapter protein for the E3 ubiquitin ligase complex formed by CUL3 and RBX1 and targets NFE2L2/NRF2 for ubiquitination and degradation by the proteasome, thus resulting in the suppression of its transcriptional activity and the repression of antioxidant response element-mediated detoxifying enzyme gene expression. Retains NFE2L2/NRF2 and may also retain BPTF in the cytosol. Targets PGAM5 for ubiquitination and degradation by the proteasome.
Abbreviation	Recombinant Human KEAP1 protein
Storage	The shelf life is related to many factors, storage state, buffer ingredients, storage temperature and the stability of the protein itself. Generally, the shelf life of liquid form is 6 months at -20°C/-80°C. The shelf life of lyophilized form is 12 months at -20°C/-80°C.
Uniprot No.	Q14145
Product Type	Recombinant Proteins
Immunogen Species	Homo sapiens (Human)
Purity	Greater than 90% as determined by SDS-PAGE.
Sequence	MQPDPSPGAGACCRFLPLQSQCEGAGDAVMYASTECKAEVTPSQHGNRT FSYTLTDHTKQAFGIMNELRLSQQLCDVTLQVKYQDAPAAQFMAHKVVLASSS PVFKAMFTNGLREQGMEVVSIEGIHPKVMERLIEFAYTASISMGEKCVLHVMN GAVMYQIDSVVRACSDFLVQQLDPSNAIGIANFAEQIGCVELHQRAREYIYMHF GEVAKQEEFFNLSHCQLVTLISRDDLNVRCSEVFHACINWVKYDCEQRRFYV QALLRAVRCHSLTPNFLQMLQKCEILQSDSRCKDYLVKIFEELTLHKPTQVMP CRAPKVGRLIYTAGGYFRQSLSYLEAYNPSDGTWLRDLADLQVPRSGLAGCVV GGLLYAVGGRNNSPDGNTDSSALDCYNPMTNQWSPCAPMSVPRNRIGVGI DGHYAVGGSHGCIHHNSVERYEPERDEWHLVAPMLTRRIGVGVAVLNRLLYA VGGFDGTNRLNSAECYPERNEWRMITAMNTIRSGAGVCVLHNCIYAAGGYD GQDQLNSVERYDVETETWTFVAPMKHRRSALGITVHQGRIYVLGGYDGHTFL DSVECYDPDPTDWTSEVTRMTSGRSGVAVTMEPCRKQIDQQNCTC
Research Area	Epigenetics and Nuclear Signaling
Source	Yeast
Target Names	KEAP1
Protein Names	Recommended name: Kelch-like ECH-associated protein 1 Alternative name(s): Cytosolic inhibitor of Nrf2 Short name= INrf2 Kelch-like protein 19
Expression Region	1-624aa
Notes	Repeated freezing and thawing is not recommended. Store working aliquots at



4°C for up to one week.

Tag Info	N-terminal 6xHis-tagged
Mol. Weight	71.7kDa
Protein Length	Full Length

Image



(Tris-Glycine gel) Discontinuous SDS-PAGE (reduced) with 5% enrichment gel and 15% separation gel.

Shelf Life

The shelf life is related to many factors, storage state, buffer ingredients, storage temperature and the stability of the protein itself.

Generally, the shelf life of liquid form is 6 months at -20°C/-80°C. The shelf life of lyophilized form is 12 months at -20°C/-80°C.