

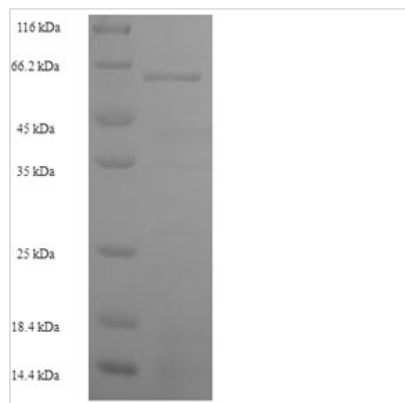


Recombinant Human S-phase kinase-associated protein 2 (SKP2)

Product Code	CSB-EP613392HU
Relevance	Substrate recognition component of a SCF (SKP1-CUL1-F-box protein) E3 ubiquitin-protein ligase complex which mediates the ubiquitination and subsequent proteasomal degradation of target proteins involved in cell cycle progression, signal transduction and transcription. Specifically recognizes phosphorylated CDKN1B/p27kip and is involved in regulation of G1/S transition. Degradation of CDKN1B/p27kip also requires CKS1. Recognizes target proteins ORC1, CDT1, RBL2, KMT2A/MLL1, CDK9, RAG2, FOXO1, UBP43, and probably MYC, TOB1 and TAL1. Degradation of TAL1 also requires STUB1. Recognizes CDKN1A in association with CCNE1 or CCNE2 and CDK2. Promotes ubiquitination and destruction of CDH1 in a CK1-Dependent Manner, thereby regulating cell migration
Abbreviation	Recombinant Human SKP2 protein
Storage	The shelf life is related to many factors, storage state, buffer ingredients, storage temperature and the stability of the protein itself. Generally, the shelf life of liquid form is 6 months at -20°C/-80°C. The shelf life of lyophilized form is 12 months at -20°C/-80°C.
Uniprot No.	Q13309
Alias	Cyclin-A/CDK2-associated protein p45F-box protein Skp2F-box/LRR-repeat protein 1p45skp2
Product Type	Recombinant Protein
Immunogen Species	Homo sapiens (Human)
Purity	Greater than 90% as determined by SDS-PAGE.
Sequence	MHRKHLQEIPDLSSNVATSFTWGWDSSTSELLSGMGVSALEKEEPDSENIP QELLSNLGHPESP RRKRLKSKGSDKDFVIVRRPKLNRENFPGVSWDSLPELL LGIFSCLCLPELLK VSGVCKRWYRLASDESLWQTLDLTGKNLHPDVTGRLLSQ GVIAFRCPRSFMDQPLAEHFSPFRVQHMDLSNSVIEVSTLHGILSQCSKLQNL LEGLRLSDPIVNTLAKNSNLVRLNLSGCSGFSEFALQTLSSCSRLDELNLSWC FDFTEKHVQVAVAHVSETITQLNLSGYRKNLQKSDLSTLVRRCPNLVHLDLSD SVMLKNDCFQEFLNYLQHLSLSRDYDIIPETLLELGEIPTLKTQVFGIVPDG TLQLLKEALPHLQINCSHFTTIARPTIGNKKNQEIWGIKCRLLTQKPSCL
Research Area	Cancer
Source	E.coli
Target Names	SKP2
Protein Names	Recommended name: S-phase kinase-associated protein 2 Alternative name(s): Cyclin-A/CDK2-associated protein p45 F-box protein Skp2 F-box/LRR-repeat protein 1 p45skp2



Expression Region	1-424aa
Notes	Repeated freezing and thawing is not recommended. Store working aliquots at 4°C for up to one week.
Tag Info	N-terminal 6xHis-SUMO-tagged
Mol. Weight	63.8kDa
Protein Length	Full Length

Image

(Tris-Glycine gel) Discontinuous SDS-PAGE (reduced) with 5% enrichment gel and 15% separation gel.

Reconstitution

We recommend that this vial be briefly centrifuged prior to opening to bring the contents to the bottom. Please reconstitute protein in deionized sterile water to a concentration of 0.1-1.0 mg/mL. We recommend to add 5-50% of glycerol (final concentration) and aliquot for long-term storage at -20°C/-80°C. Our default final concentration of glycerol is 50%. Customers could use it as reference.

Shelf Life

The shelf life is related to many factors, storage state, buffer ingredients, storage temperature and the stability of the protein itself. Generally, the shelf life of liquid form is 6 months at -20°C/-80°C. The shelf life of lyophilized form is 12 months at -20°C/-80°C.