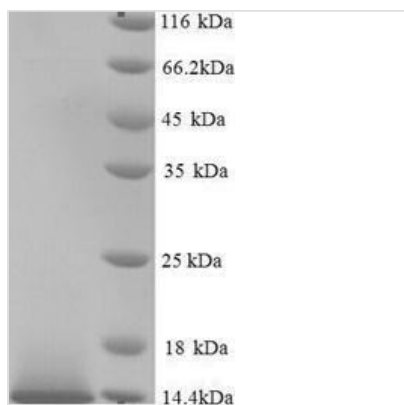




Recombinant Human Guanylate cyclase activator 2B (GUCA2B)

Product Code	CSB-YP613693HU
Relevance	Endogenous activator of intestinal guanylate cyclase. It stimulates this enzyme through the same receptor binding region as the heat-stable enterotoxins. May be a potent physiological regulator of intestinal fluid and electrolyte transport. May be an autocrine/paracrine regulator of intestinal salt and water transport.
Abbreviation	Recombinant Human GUCA2B protein
Storage	The shelf life is related to many factors, storage state, buffer ingredients, storage temperature and the stability of the protein itself. Generally, the shelf life of liquid form is 6 months at -20°C/-80°C. The shelf life of lyophilized form is 12 months at -20°C/-80°C.
Uniprot No.	Q16661
Alias	Guanylate cyclase C-activating peptide II ;GCAP-IIUroguanylin ;UGN
Product Type	Recombinant Protein
Immunogen Species	Homo sapiens (Human)
Purity	≥ 90% as determined by SDS-PAGE.
Sequence	VYIQYQGFRVQLESMKKLSDLEAQWAPSPRLQAQSLLPVCHHPALPQDLQP VCASQEASSIFKTLRTIANDDCELCVNVACTGCL
Research Area	Signal Transduction
Source	Yeast
Target Names	GUCA2B
Protein Names	Recommended name: Guanylate cyclase activator 2B Cleaved into the following 2 chains: 1. Guanylate cyclase C-activating peptide 2 Alternative name(s): Guanylate cyclase C-activating peptide II Short name= GCAP-II Uroguanylin Short name=
Expression Region	27-112aa
Notes	Repeated freezing and thawing is not recommended. Store working aliquots at 4°C for up to one week.
Tag Info	N-terminal 6xHis-tagged
Mol. Weight	11.5kDa
Protein Length	Full Length of Mature Protein
Image	



(Tris-Glycine gel) Discontinuous SDS-PAGE (reduced) with 5% enrichment gel and 15% separation gel.

Reconstitution

We recommend that this vial be briefly centrifuged prior to opening to bring the contents to the bottom. Please reconstitute protein in deionized sterile water to a concentration of 0.1-1.0 mg/mL. We recommend to add 5-50% of glycerol (final concentration) and aliquot for long-term storage at -20°C/-80°C. Our default final concentration of glycerol is 50%. Customers could use it as reference.

Shelf Life

The shelf life is related to many factors, storage state, buffer ingredients, storage temperature and the stability of the protein itself. Generally, the shelf life of liquid form is 6 months at -20°C/-80°C. The shelf life of lyophilized form is 12 months at -20°C/-80°C.