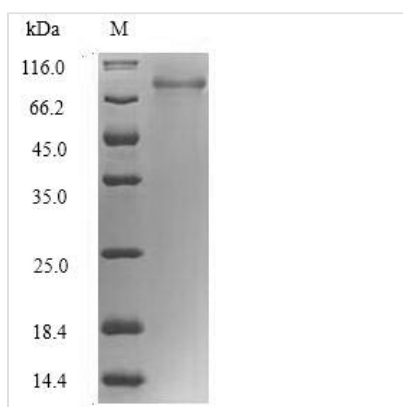




Recombinant Human RNA-binding motif protein, Y chromosome, family 1 member F/J (RBM1F)

Product Code	CSB-EP614891HU
Relevance	RNA-binding protein which may be involved in spermatogenesis. Required for sperm development, possibly by participating in pre-mRNA splicing in the testis.
Abbreviation	Recombinant Human RBMY1F protein
Storage	The shelf life is related to many factors, storage state, buffer ingredients, storage temperature and the stability of the protein itself. Generally, the shelf life of liquid form is 6 months at -20°C/-80°C. The shelf life of lyophilized form is 12 months at -20°C/-80°C.
Uniprot No.	Q15415
Alias	Y chromosome RNA recognition motif 2
Product Type	Recombinant Protein
Immunogen Species	Homo sapiens (Human)
Purity	≥ 90% as determined by SDS-PAGE.
Sequence	MVEADHPGKLFIGGLNRETNEKMLKAVFGKHGPISEVLLIKDRTSKSRGF FIT FENPADAKNAAKDMNGTSLHGKAIKVEQAKKPSFQSGGRRRPPASSRNRSPS GSLRSARGSSGGTRGWLP SHEGHLDDGGYTPDLKMSYSRGLIPVKRGPSSR SGGPPPKKSAPSAVARSNSWMGSGQPMSQRRENYGVPPRRATISSWRNDR MSTRHDGYATNDGNHPSCQETRDYAPPSRGYAYRDNGHSNRDEHSSRGYR NHRSSRETRDYAPPSRGHAYRDYGHSSRRDESYRGRNHRSSRETRDYAPP SRGHGYRDIYGHSSRRHESYRGRNHPSSRETRDYAPPHRDYAYRDIYGHSS WDEHSSRGYSYHDGYGEALGRDHSEHLGSSYRDALQRYGTSHGAPPARG PRMSYGGSTCHAYSNTRDRYGRSWESYSSCGDFHYCDREHVCRKDQRNPP SLGRVLPDPREAYGSSSYVASIVDGGESRSEKGDSSRY
Research Area	Developmental Biology
Source	E.coli
Target Names	RBM1F
Protein Names	Recommended name: RNA-binding motif protein, Y chromosome, family 1 member F/J Alternative name(s): Y chromosome RNA recognition motif 2
Expression Region	1-496aa
Notes	Repeated freezing and thawing is not recommended. Store working aliquots at 4°C for up to one week.
Tag Info	N-terminal 6xHis-SUMO-tagged
Mol. Weight	71.7kDa
Protein Length	Full Length
Image	



(Tris-Glycine gel) Discontinuous SDS-PAGE (reduced) with 5% enrichment gel and 15% separation gel.

Reconstitution

We recommend that this vial be briefly centrifuged prior to opening to bring the contents to the bottom. Please reconstitute protein in deionized sterile water to a concentration of 0.1-1.0 mg/mL. We recommend to add 5-50% of glycerol (final concentration) and aliquot for long-term storage at -20°C/-80°C. Our default final concentration of glycerol is 50%. Customers could use it as reference.

Shelf Life

The shelf life is related to many factors, storage state, buffer ingredients, storage temperature and the stability of the protein itself. Generally, the shelf life of liquid form is 6 months at -20°C/-80°C. The shelf life of lyophilized form is 12 months at -20°C/-80°C.