



# Recombinant Human Dihydropyrimidinase-related protein 2 (DPYSL2)

<b>Product Code</b>	CSB-YP614975HU
<b>Relevance</b>	Plays a role in neuronal development and polarity, as well as in axon growth and guidance, neuronal growth cone collapse and cell migration. Necessary for signaling by class 3 saphorins and subsequent remodeling of the cytoskeleton. May play a role in endocytosis.
<b>Abbreviation</b>	Recombinant Human DPYSL2 protein
<b>Storage</b>	The shelf life is related to many factors, storage state, buffer ingredients, storage temperature and the stability of the protein itself. Generally, the shelf life of liquid form is 6 months at -20°C/-80°C. The shelf life of lyophilized form is 12 months at -20°C/-80°C.
<b>Uniprot No.</b>	Q16555
<b>Alias</b>	Collapsin response mediator protein 2 ;CRMP-2N2A3Unc-33-like phosphoprotein 2 ;ULIP-2
<b>Product Type</b>	Recombinant Protein
<b>Immunogen Species</b>	Homo sapiens (Human)
<b>Purity</b>	Greater than 90% as determined by SDS-PAGE.
<b>Sequence</b>	MSYQGKKNIPRITSDRLLIKGGKIVNDDQSFYADIYMEDGLIKQIGENLIVPGGV KTIEAHSRMVIPGGIDVHTRFQMPDQGMTSADDFQGTKAALAGGTTMIIDHV VPEPGTSLLAAFDQWREWADSKSCCDYSLHVDISEWHKGIQEEMEALVKDHG VNSFLVYMAFKDRFQLTDCQIYEVLSVIRDIGAIQVHAENGDIIEEQQRILDLG ITGPEGHVLSRPEEVEAEAVNRAITIANQTNCPYITKVMSSAEVIAQARKKG TVVYGEPIASLGTGSHYWSKNWAKAAAFVTSPLSPDPTTDFLNSLLSCG DLQVTGSAHCTFNQAQKAVGKDNFTLIPEGTNGTEERMSVIWDKAVVTGKMD ENQFVAVTSTNAAKVFNLVPRKGRIAVGSDADLVIWDPDSVKTISAKTHNSSLE YNIFEGMECRGSPLVVISQGKIVLEDGTLHVTEGSGRYIPRKPFPDFVYKRIKA RSRLAELRGVPRGLYDGPVCEVSVTPKTVTPASSAKTSPAKQQAPPVRNLHQ SGFSLSGAQIDDNIPRRTTQRIVAPPGGRANITSLG
<b>Research Area</b>	Developmental Biology
<b>Source</b>	Yeast
<b>Target Names</b>	DPYSL2
<b>Protein Names</b>	Recommended name: Dihydropyrimidinase-related protein 2 Short name= DRP-2 Alternative name(s): Collapsin response mediator protein 2 Short name= CRMP-2 N2A3 Unc-33-like phosphoprotein 2 Short name= ULIP-2
<b>Expression Region</b>	1-572aa
<b>Notes</b>	Repeated freezing and thawing is not recommended. Store working aliquots at 4°C for up to one week.

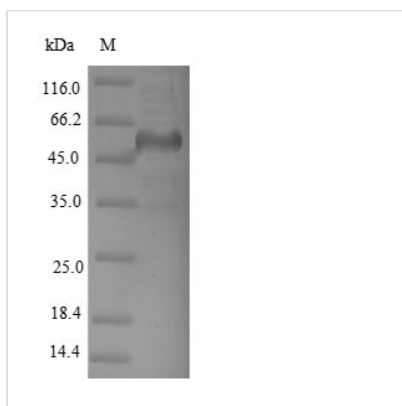


**Tag Info** N-terminal 6xHis-tagged

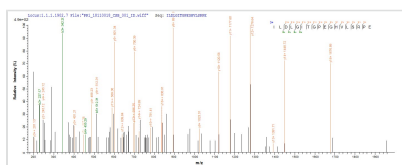
**Mol. Weight** 64.3kDa

**Protein Length** Full Length

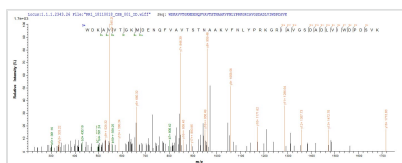
**Image**



(Tris-Glycine gel) Discontinuous SDS-PAGE (reduced) with 5% enrichment gel and 15% separation gel.



Based on the SEQUEST from database of Yeast host and target protein, the LC-MS/MS Analysis result of CSB-YP614975HU could indicate that this peptide derived from Yeast-expressed Homo sapiens (Human) DPYSL2.



Based on the SEQUEST from database of Yeast host and target protein, the LC-MS/MS Analysis result of CSB-YP614975HU could indicate that this peptide derived from Yeast-expressed Homo sapiens (Human) DPYSL2.

**Reconstitution**

We recommend that this vial be briefly centrifuged prior to opening to bring the contents to the bottom. Please reconstitute protein in deionized sterile water to a concentration of 0.1-1.0 mg/mL. We recommend to add 5-50% of glycerol (final concentration) and aliquot for long-term storage at -20°C/-80°C. Our default final concentration of glycerol is 50%. Customers could use it as reference.

**Shelf Life**

The shelf life is related to many factors, storage state, buffer ingredients, storage temperature and the stability of the protein itself. Generally, the shelf life of liquid form is 6 months at -20°C/-80°C. The shelf life of lyophilized form is 12 months at -20°C/-80°C.