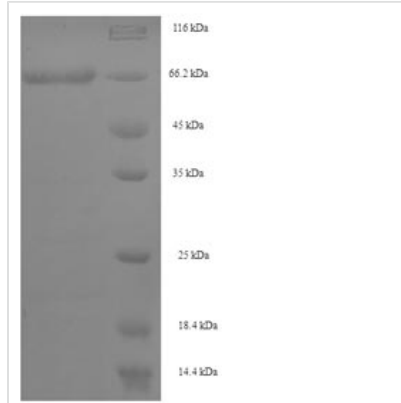


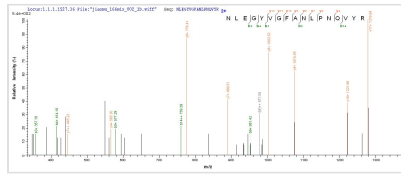


Recombinant Human Septin-7 (SEPTIN7)

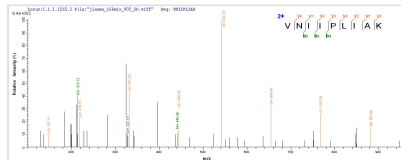
Product Code	CSB-EP620952HU
Relevance	Filament-forming cytoskeletal GTPase. Required for normal organization of the actin cytoskeleton. Required for normal progress through mitosis. Involved in cytokinesis. Required for normal association of CENPE with the kinetochore. Plays a role in ciliogenesis and collective cell movements.
Abbreviation	Recombinant Human SEPTIN7 protein
Storage	The shelf life is related to many factors, storage state, buffer ingredients, storage temperature and the stability of the protein itself. Generally, the shelf life of liquid form is 6 months at -20°C/-80°C. The shelf life of lyophilized form is 12 months at -20°C/-80°C.
Uniprot No.	Q16181
Product Type	Recombinant Proteins
Immunogen Species	Homo sapiens (Human)
Purity	Greater than 90% as determined by SDS-PAGE.
Sequence	SVSARSAAAEERSVNSSTMVAQQKNLEGYVGFANLPNQVYRKSVKRGFEFTL MVGESGLGKSTLINSFLTDLYSPEYPGPSHRIKKTQVEQSKVLIKEGGVQL LLTIVDTPGFGDAVDNSNCWQPVIDYIDSKFEDYLNAESRVNRRQMPDNRVQ CCLYFIAPSGHGLKPLDIEFMKRLHEKVNIPLIAKADTLTPEECQQFKKQIMKEI QEHKIKIYEFPETDDEEENKLVKKIKDRLPLAVVGSNTIIEVNGKRVRGRQYPW GVAEVENGEHCDFILRNMLIRTHMQDLKDVTNNVHYENYRSRKLAAVTYNGV DNNKNKGQLTKSPLAQMEEERREHVAKMKMEMEMEQVFEMKVKEKVQKLK DSEAE LQRRHEQMKNLEAQHKELEEKRRQFEDEKANWEAQQRILEQQNSS RTLEKNKKKKGKIF
Research Area	Cell Biology
Source	E.coli
Target Names	SEPTIN7
Protein Names	Recommended name: Septin-7 Alternative name(s): CDC10 protein homolog
Expression Region	2-437aa
Notes	Repeated freezing and thawing is not recommended. Store working aliquots at 4°C for up to one week.
Tag Info	N-terminal 6xHis-SUMO-tagged
Mol. Weight	66.5kDa
Protein Length	Full Length of Mature Protein
Image	



(Tris-Glycine gel) Discontinuous SDS-PAGE (reduced) with 5% enrichment gel and 15% separation gel.



Based on the SEQUEST from database of E.coli host and target protein, the LC-MS/MS Analysis result of CSB-EP620952HU could indicate that this peptide derived from E.coli-expressed Homo sapiens (Human) SEPT7.



Based on the SEQUEST from database of E.coli host and target protein, the LC-MS/MS Analysis result of CSB-EP620952HU could indicate that this peptide derived from E.coli-expressed Homo sapiens (Human) SEPT7.

Shelf Life

The shelf life is related to many factors, storage state, buffer ingredients, storage temperature and the stability of the protein itself.

Generally, the shelf life of liquid form is 6 months at -20°C/-80°C. The shelf life of lyophilized form is 12 months at -20°C/-80°C.