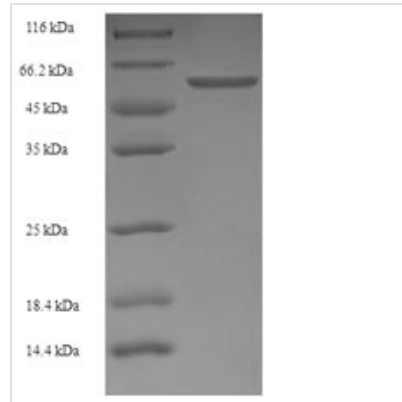




# Recombinant Rat Lutropin-choriogonadotropic hormone receptor (Lhcgr), partial

<b>Product Code</b>	CSB-EP012911RA
<b>Relevance</b>	Receptor for lutropin-choriogonadotropic hormone. The activity of this receptor is mediated by G proteins which activate adenylate cyclase.
<b>Abbreviation</b>	Recombinant Rat Lhcgr protein, partial
<b>Storage</b>	The shelf life is related to many factors, storage state, buffer ingredients, storage temperature and the stability of the protein itself. Generally, the shelf life of liquid form is 6 months at -20°C/-80°C. The shelf life of lyophilized form is 12 months at -20°C/-80°C.
<b>Uniprot No.</b>	P16235
<b>Alias</b>	Luteinizing hormone receptor ;LSH-R
<b>Product Type</b>	Recombinant Protein
<b>Immunogen Species</b>	Rattus norvegicus (Rat)
<b>Purity</b>	≥ 90% as determined by SDS-PAGE.
<b>Sequence</b>	RELSGSRCPPEPCDCAPDGALRCPGPRAGLARLSLTYLPVKVIPSQAFRGLNEV VKIEISQSDSLERIEANAFDNLNLSSELLIQNTKNLLYIEPGAFTNLPRLKYL SICNTGIRTLDPVTKISSSEFNFILEICDNLHITTIPGNAFQGMNNEVTLKLYGNGFEE VQSHAFNGTTLISLELKENIYLEKMHSGAFQGATGPSILDISSTKLQALPSHGLE SIQTLIALSSYSKTLPSKEKFTSLLVATLTYPSHCCAFRNLPKKEQNFSFSIFEN FSKQCESTVRKADNETLYSAIFEENELSGWDYDYGFCSPKTLQCAPEPDAFNP CEDIMG
<b>Research Area</b>	Others
<b>Source</b>	E.coli
<b>Target Names</b>	Lhcgr
<b>Protein Names</b>	Recommended name: Lutropin-choriogonadotropic hormone receptor Short name= LH/CG-R Alternative name(s): Luteinizing hormone receptor Short name= LSH-R
<b>Expression Region</b>	27-362aa
<b>Notes</b>	Repeated freezing and thawing is not recommended. Store working aliquots at 4°C for up to one week.
<b>Tag Info</b>	N-terminal 6xHis-SUMO-tagged
<b>Mol. Weight</b>	53.2kDa
<b>Protein Length</b>	Extracellular Domain
<b>Image</b>	



(Tris-Glycine gel) Discontinuous SDS-PAGE (reduced) with 5% enrichment gel and 15% separation gel.

### Reconstitution

We recommend that this vial be briefly centrifuged prior to opening to bring the contents to the bottom. Please reconstitute protein in deionized sterile water to a concentration of 0.1-1.0 mg/mL. We recommend to add 5-50% of glycerol (final concentration) and aliquot for long-term storage at -20°C/-80°C. Our default final concentration of glycerol is 50%. Customers could use it as reference.

### Shelf Life

The shelf life is related to many factors, storage state, buffer ingredients, storage temperature and the stability of the protein itself. Generally, the shelf life of liquid form is 6 months at -20°C/-80°C. The shelf life of lyophilized form is 12 months at -20°C/-80°C.