

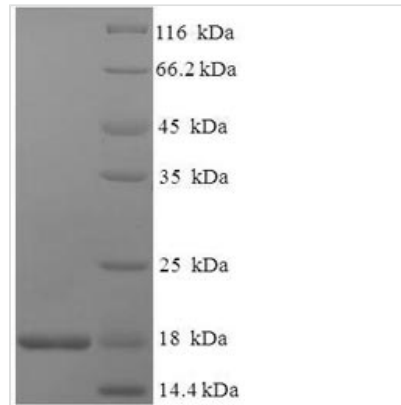


Recombinant Dog Epididymal secretory protein E1 (NPC2)

Product Code	CSB-EP634688DO
Relevance	Intracellular cholesterol transporter which acts in concert with NPC1 and plays an important role in the egress of cholesterol from the endosomal/lysosomal compartment. Both NPC1 and NPC2 function as the cellular 'tag team duo' (TTD) to catalyze the mobilization of cholesterol within the multivesicular environment of the late endosome (LE) to effect egress through the limiting bilayer of the LE. NPC2 binds unesterified cholesterol that has been released from LDLs in the lumen of the late endosomes/lysosomes and transfers it to the cholesterol-binding pocket of the N-terminal domain of NPC1. Cholesterol binds to NPC1 with the hydroxyl group buried in the binding pocket and is exported from the limiting mbrane of late endosomes/ lysosomes to the ER and plasma mbrane by an unknown mechanism. The secreted form of NCP2 regulates biliary cholesterol secretion via stimulation of ABCG5/ABCG8-mediated cholesterol transport .
Abbreviation	Recombinant Dog NPC2 protein
Storage	The shelf life is related to many factors, storage state, buffer ingredients, storage temperature and the stability of the protein itself. Generally, the shelf life of liquid form is 6 months at -20°C/-80°C. The shelf life of lyophilized form is 12 months at -20°C/-80°C.
Uniprot No.	Q28895
Alias	Niemann Pick type C2 protein homologcE1
Product Type	Recombinant Protein
Immunogen Species	Canis lupus familiaris (Dog) (Canis familiaris)
Purity	Greater than $\geq 90\%$ as determined by SDS-PAGE.
Sequence	VHFKDCGSAVGVIKELNVNCPAQPCKLHKGQSYSVNVTFTSNIPSQSSKAVV HGIVLGVAVPFPIPEADGCKSGINCPIQKDKTYSYLNKLPVKNEYPSIKLVVQW MLLGDNNQHLFCWEIPVQIEG
Research Area	Others
Source	E.coli
Target Names	NPC2
Expression Region	22-149aa
Notes	Repeated freezing and thawing is not recommended. Store working aliquots at 4°C for up to one week.
Tag Info	N-terminal 6xHis-tagged
Mol. Weight	18.0kDa
Protein Length	Full Length of Mature Protein



Image



(Tris-Glycine gel) Discontinuous SDS-PAGE (reduced) with 5% enrichment gel and 15% separation gel.

Reconstitution

We recommend that this vial be briefly centrifuged prior to opening to bring the contents to the bottom. Please reconstitute protein in deionized sterile water to a concentration of 0.1-1.0 mg/mL. We recommend to add 5-50% of glycerol (final concentration) and aliquot for long-term storage at -20°C/-80°C. Our default final concentration of glycerol is 50%. Customers could use it as reference.

Shelf Life

The shelf life is related to many factors, storage state, buffer ingredients, storage temperature and the stability of the protein itself.

Generally, the shelf life of liquid form is 6 months at -20°C/-80°C. The shelf life of lyophilized form is 12 months at -20°C/-80°C.