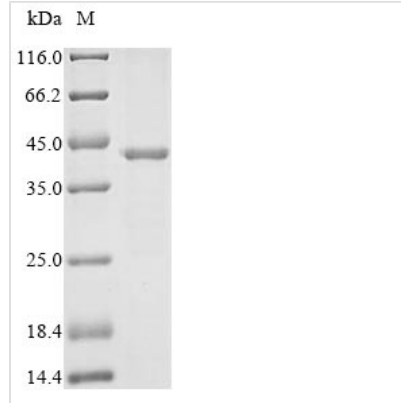


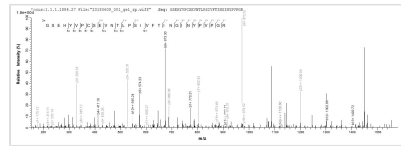


# Recombinant Bovine Pregnancy-associated glycoprotein 1

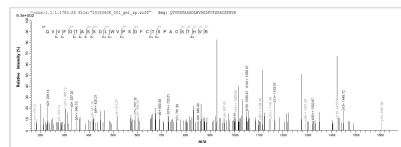
<b>Product Code</b>	CSB-YP644917BO
<b>Relevance</b>	Appears to be proteolytically inactive.
<b>Storage</b>	The shelf life is related to many factors, storage state, buffer ingredients, storage temperature and the stability of the protein itself. Generally, the shelf life of liquid form is 6 months at -20°C/-80°C. The shelf life of lyophilized form is 12 months at -20°C/-80°C.
<b>Uniprot No.</b>	Q29432
<b>Product Type</b>	Recombinant Protein
<b>Immunogen Species</b>	Bos taurus (Bovine)
<b>Purity</b>	Greater than 85% as determined by SDS-PAGE.
<b>Sequence</b>	RGSNLTTHPLRNIKDLVYMGNITIGTPPQEFQVVFDTASSDLWVPSDFCTSPAC STHVRFRHLQSSTFRLTNKTFRITYGSGRMKGVVVHDTVIRIGNLVSTDQPFG L SIEEYGFEGRIYDGV LGLNYPNISFSGAIPFDKLNQRAISEPVFAFYLSKDERE GSVVMFGGVDHRYEYEGELNWWPLIQAGDWSVHMDRISIERKIIACSDGCKALV DTGTSDIVGPRRLVNNIHR LIGAI PRGSEHYVPCSEVNTLPSIVFTINGINYPVPG RAYILKDDRGRCYTTTFQENRVSSSTETWYLGDVFLRLYFSVFD RGNDRIGLAR AV
<b>Research Area</b>	Others
<b>Source</b>	Yeast
<b>Protein Names</b>	Pregnancy-specific protein BShort name:PSP-B
<b>Expression Region</b>	54-380aa
<b>Notes</b>	Repeated freezing and thawing is not recommended. Store working aliquots at 4°C for up to one week.
<b>Tag Info</b>	C-terminal Myc-tagged and C-terminal 6xHis-tagged
<b>Mol. Weight</b>	39.7 kDa
<b>Protein Length</b>	Full Length of Mature Protein
<b>Image</b>	



(Tris-Glycine gel) Discontinuous SDS-PAGE (reduced) with 5% enrichment gel and 15% separation gel.



Based on the SEQUEST from database of Yeast host and target protein, the LC-MS/MS Analysis result of CSB-YP644917BO could indicate that this peptide derived from Yeast-expressed Bos taurus (Bovine) N/A.



Based on the SEQUEST from database of Yeast host and target protein, the LC-MS/MS Analysis result of CSB-YP644917BO could indicate that this peptide derived from Yeast-expressed Bos taurus (Bovine) N/A.

**Reconstitution**

We recommend that this vial be briefly centrifuged prior to opening to bring the contents to the bottom. Please reconstitute protein in deionized sterile water to a concentration of 0.1-1.0 mg/mL. We recommend to add 5-50% of glycerol (final concentration) and aliquot for long-term storage at -20°C/-80°C. Our default final concentration of glycerol is 50%. Customers could use it as reference.

**Shelf Life**

The shelf life is related to many factors, storage state, buffer ingredients, storage temperature and the stability of the protein itself. Generally, the shelf life of liquid form is 6 months at -20°C/-80°C. The shelf life of lyophilized form is 12 months at -20°C/-80°C.