

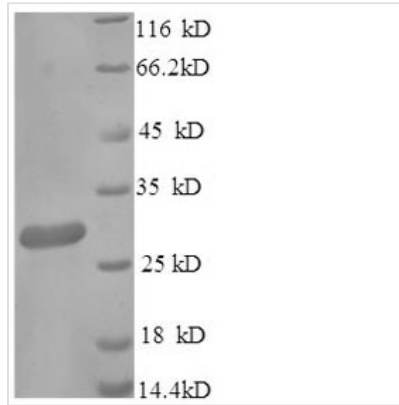


Recombinant Mouse Scavenger receptor cysteine-rich type 1 protein M130 (Cd163), partial

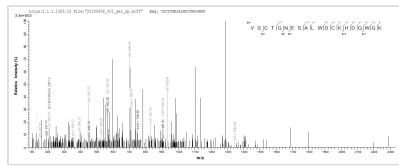
Product Code	CSB-EP650452MO
Relevance	Involved in clearance and endocytosis of hoglobin/haptoglobin complexes by macrophages and may thereby protect tissues from free hoglobin-mediated oxidative damage. May play a role in the uptake and recycling of iron, via endocytosis of hoglobin/haptoglobin and subsequent breakdown of he. Binds hoglobin/haptoglobin complexes in a calcium-dependent and pH-dependent manner. Induces a cascade of intracellular signals that involves tyrosine kinase-dependent calcium mobilization, inositol triphosphate production and secretion of IL6 and CSF1 .After shedding, the soluble form (sCD163) may play an anti-inflammatory role.
Abbreviation	Recombinant Mouse Cd163 protein, partial
Storage	The shelf life is related to many factors, storage state, buffer ingredients, storage temperature and the stability of the protein itself. Generally, the shelf life of liquid form is 6 months at -20°C/-80°C. The shelf life of lyophilized form is 12 months at -20°C/-80°C.
Uniprot No.	Q2VLH6
Alias	CD163
Product Type	Recombinant Protein
Immunogen Species	Mus musculus (Mouse)
Purity	Greater than 90% as determined by SDS-PAGE.
Sequence	VVCQQLGCPTSIKALGWANSSAGSGYIWMKVSCTGNESALWDCKHDGWG KHNCTHEKDAGVTCSDGSNLEMRLVNSAGHRCLGRVEIKFQGKWGTVCCDN FSKDHASVICKQLGCGSAISFSGSAKLGAGSGPIWLDDLACNGNESALWDCK HRGWGKHNCDAEDVGVICLEGADLSLRLVDGVSRCGRLEVRVFQGEWGT CCDNWDLRDASVVCKQLGCPTAISAIGRVNASEGSGQIWLNDNISCEGHEATL WECKHQEWGKHYCHHREDAGVTCS
Research Area	Others
Source	E.coli
Target Names	Cd163
Expression Region	86-365aa
Notes	Repeated freezing and thawing is not recommended. Store working aliquots at 4°C for up to one week.
Tag Info	N-terminal 6xHis-tagged
Mol. Weight	34.2kDa
Protein Length	Partial



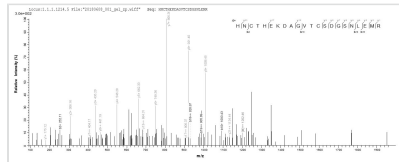
Image



(Tris-Glycine gel) Discontinuous SDS-PAGE (reduced) with 5% enrichment gel and 15% separation gel.



Based on the SEQUEST from database of E.coli host and target protein, the LC-MS/MS Analysis result of CSB-EP650452MO could indicate that this peptide derived from E.coli-expressed Mus musculus (Mouse) Cd163.



Based on the SEQUEST from database of E.coli host and target protein, the LC-MS/MS Analysis result of CSB-EP650452MO could indicate that this peptide derived from E.coli-expressed Mus musculus (Mouse) Cd163.

Reconstitution

We recommend that this vial be briefly centrifuged prior to opening to bring the contents to the bottom. Please reconstitute protein in deionized sterile water to a concentration of 0.1-1.0 mg/mL. We recommend to add 5-50% of glycerol (final concentration) and aliquot for long-term storage at -20°C/-80°C. Our default final concentration of glycerol is 50%. Customers could use it as reference.

Shelf Life

The shelf life is related to many factors, storage state, buffer ingredients, storage temperature and the stability of the protein itself. Generally, the shelf life of liquid form is 6 months at -20°C/-80°C. The shelf life of lyophilized form is 12 months at -20°C/-80°C.