



Recombinant Human Fibulin-1 (FBLN1)

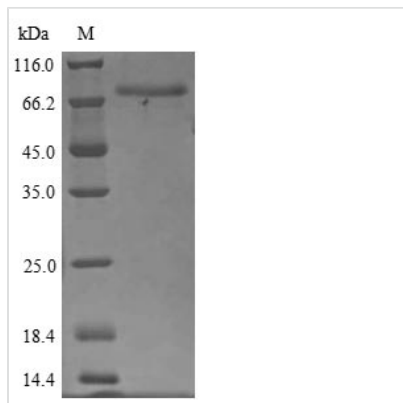
Product Code	CSB-YP008452HU
Relevance	Incorporated into fibronectin-containing matrix fibers. May play a role in cell adhesion and migration along protein fibers within the extracellular matrix (ECM). Could be important for certain developmental processes and contribute to the supramolecular organization of ECM architecture, in particular to those of basement membranes. Has been implicated in a role in cellular transformation and tumor invasion, it appears to be a tumor suppressor. May play a role in haemostasis and thrombosis owing to its ability to bind fibrinogen and incorporate into clots. Could play a significant role in modulating the neurotrophic activities of APP, particularly soluble APP.
Storage	The shelf life is related to many factors, storage state, buffer ingredients, storage temperature and the stability of the protein itself. Generally, the shelf life of liquid form is 6 months at -20°C/-80°C. The shelf life of lyophilized form is 12 months at -20°C/-80°C.
Uniprot No.	P23142
Product Type	Recombinant Protein
Immunogen Species	Homo sapiens (Human)
Purity	Greater than 85% as determined by SDS-PAGE.
Sequence	DVLLLEACCADGHRMATHQKDCSLPYATESKECRMVQEQCCHSQLEELHCAT GISLANEQDRCATPHGDNASLEATFVKRCCHCCLLGRAAQAQGQSCEYSLMV GYQCGQVFQACCVKSQETGDLVDVGGQLQETDKIIEVEEQEDPYLNDRCRGG GPCKQQCRDTGDEVVCSCFVGYQLLSDGVSCEDVNECITGSHSCRLGESCIN TVGSFRCQRDSSCGTGYELTEDNSCKDIDECESGIHNCLPDFICQNTLGSFRC RPKLQCKSGFIQDALGNCIDINECLISAPCPIGHTCINTEGSYTCQKNVPNCG RGYHLNEEGTRCVDVDECAPPAEPCGKGHRCVNSPGSFRCECKTGYFFDGI SRMCVDVNECQRYPGRLCGHKCENTLGSYLCSCSVGFRLSVDGRSCEDINE CSSSPCSQECANVYGSYQCYCRRGYQLSDVDGVTCEDIDECALPTGGHICSY RCINIPGSFQCSCPSSGYRLAPNGRNCQDIDECVTGIHNCSINETCFNIQGGFR CLAFECPENYR RSAATLQQEKTDTVRCIKSCRPNVDVTCVFDPVHTISHTVISLP TFREFTRPEEIIFLRAITPPHPASQANIIFDITEGNLRDSFDIIKRYMDGMTVGVV RQVRPIVGPFFHAVLKLEMNYVVGGVVSHRNVNVHIFVSEYWF
Research Area	Cancer
Source	Yeast
Target Names	FBLN1
Protein Names	Recommended name: Fibulin-1 Short name= FIBL-1
Expression Region	30-703aa
Notes	Repeated freezing and thawing is not recommended. Store working aliquots at 4°C for up to one week.
Tag Info	C-terminal Myc-tagged and C-terminal 6xHis-tagged



Mol. Weight 77.3 kDa

Protein Length Full Length of Mature Protein

Image



(Tris-Glycine gel) Discontinuous SDS-PAGE (reduced) with 5% enrichment gel and 15% separation gel.

Reconstitution

We recommend that this vial be briefly centrifuged prior to opening to bring the contents to the bottom. Please reconstitute protein in deionized sterile water to a concentration of 0.1-1.0 mg/mL. We recommend to add 5-50% of glycerol (final concentration) and aliquot for long-term storage at -20°C/-80°C. Our default final concentration of glycerol is 50%. Customers could use it as reference.

Shelf Life

The shelf life is related to many factors, storage state, buffer ingredients, storage temperature and the stability of the protein itself. Generally, the shelf life of liquid form is 6 months at -20°C/-80°C. The shelf life of lyophilized form is 12 months at -20°C/-80°C.