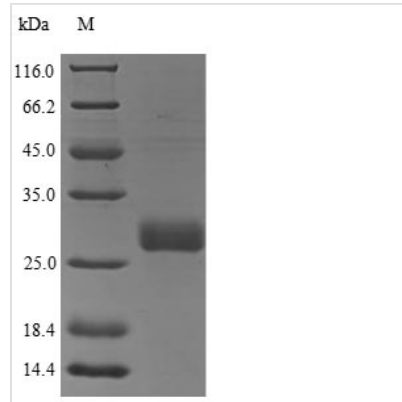




Recombinant Rat Oncostatin-M (Osm)

Product Code	CSB-YP723970RA
Relevance	Growth regulator. Inhibits the proliferation of a number of tumor cell lines. It regulates cytokine production, including IL-6, G-CSF and GM-CSF from endothelial cells. Uses only type II OSM receptor (heterodimers composed of OSMR and IL6ST). Involved in the maturation of fetal hepatocytes, thereby promoting liver development and regeneration.
Abbreviation	Recombinant Rat Osm protein
Storage	The shelf life is related to many factors, storage state, buffer ingredients, storage temperature and the stability of the protein itself. Generally, the shelf life of liquid form is 6 months at -20°C/-80°C. The shelf life of lyophilized form is 12 months at -20°C/-80°C.
Uniprot No.	Q65Z15
Product Type	Recombinant Protein
Immunogen Species	Rattus norvegicus (Rat)
Purity	Greater than 85% as determined by SDS-PAGE.
Sequence	KRGCSSSSPKLLSQLKSQANITGNTASLLEPYILHQNLNLTTLRAACTEHPVAF PSEDMLRQLSKPDFLSTVHATLGRVWHQLGAFRQQFPKIQDFPELERARQNI QGIRNNVYCMARLLHPPLEIPEPTQADSGTSRPTTTAPGIFQIKIDSCRFLWGY HRFMGSVGRVFEEWGDGSRRSRR
Research Area	Immunology
Source	Yeast
Target Names	Osm
Protein Names	Recommended name: Oncostatin-M Short name= OSM
Expression Region	26-208aa
Notes	Repeated freezing and thawing is not recommended. Store working aliquots at 4°C for up to one week.
Tag Info	N-terminal 6xHis-tagged
Mol. Weight	22.6 kDa
Protein Length	Full Length of Mature Protein
Image	



(Tris-Glycine gel) Discontinuous SDS-PAGE (reduced) with 5% enrichment gel and 15% separation gel.

Reconstitution

We recommend that this vial be briefly centrifuged prior to opening to bring the contents to the bottom. Please reconstitute protein in deionized sterile water to a concentration of 0.1-1.0 mg/mL. We recommend to add 5-50% of glycerol (final concentration) and aliquot for long-term storage at -20°C/-80°C. Our default final concentration of glycerol is 50%. Customers could use it as reference.

Shelf Life

The shelf life is related to many factors, storage state, buffer ingredients, storage temperature and the stability of the protein itself. Generally, the shelf life of liquid form is 6 months at -20°C/-80°C. The shelf life of lyophilized form is 12 months at -20°C/-80°C.