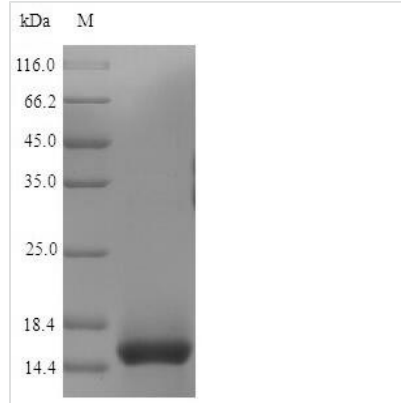


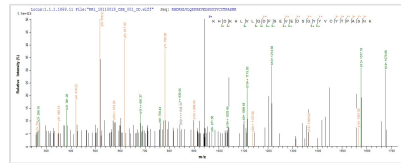


# Recombinant Mouse T-cell surface glycoprotein CD3 epsilon chain (Cd3e), partial

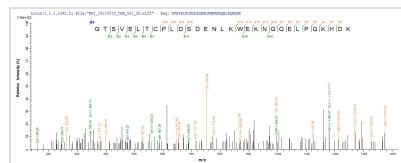
<b>Product Code</b>	CSB-YP004931MO
<b>Relevance</b>	The CD3 complex mediates signal transduction, resulting in T cell activation and proliferation. Required for normal immune responses.
<b>Abbreviation</b>	Recombinant Mouse Cd3e protein, partial
<b>Storage</b>	The shelf life is related to many factors, storage state, buffer ingredients, storage temperature and the stability of the protein itself. Generally, the shelf life of liquid form is 6 months at -20°C/-80°C. The shelf life of lyophilized form is 12 months at -20°C/-80°C.
<b>Uniprot No.</b>	P22646
<b>Storage Buffer</b>	Tris-based buffer,50% glycerol
<b>Product Type</b>	Recombinant Proteins
<b>Immunogen Species</b>	Mus musculus (Mouse)
<b>Purity</b>	Greater than 90% as determined by SDS-PAGE.
<b>Sequence</b>	DAENIEYKVSISGTSVELTCPLDSDENLKWEKNGQELPQKHDKHLVLQDFSEV EDSGYYVCYTPASNKNTYLYLKARVCEYCV EVD
<b>Research Area</b>	Immunology
<b>Source</b>	Yeast
<b>Target Names</b>	Cd3e
<b>Protein Names</b>	Alternative name(s):T-cell surface antigen T3/Leu-4 epsilon chainCD_antigen: CD3e
<b>Expression Region</b>	23-108aa
<b>Notes</b>	Repeated freezing and thawing is not recommended. Store working aliquots at 4°C for up to one week.
<b>Tag Info</b>	N-terminal 6xHis-tagged
<b>Mol. Weight</b>	11.9 kDa
<b>Protein Length</b>	Extracellular Domain
<b>Image</b>	



(Tris-Glycine gel) Discontinuous SDS-PAGE (reduced) with 5% enrichment gel and 15% separation gel.



Based on the SEQUEST from database of Yeast host and target protein, the LC-MS/MS Analysis result of CSB-YP004931MO could indicate that this peptide derived from Yeast-expressed Mus musculus (Mouse) Cd3e.



Based on the SEQUEST from database of Yeast host and target protein, the LC-MS/MS Analysis result of CSB-YP004931MO could indicate that this peptide derived from Yeast-expressed Mus musculus (Mouse) Cd3e.

### Shelf Life

The shelf life is related to many factors, storage state, buffer ingredients, storage temperature and the stability of the protein itself.

Generally, the shelf life of liquid form is 6 months at -20°C/-80°C. The shelf life of lyophilized form is 12 months at -20°C/-80°C.