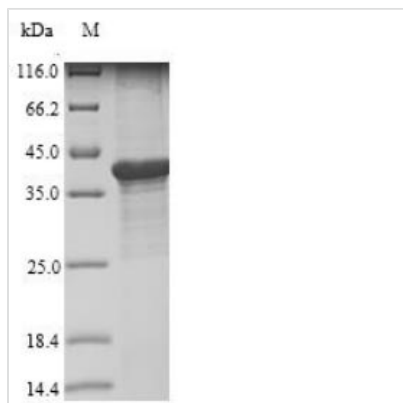




Recombinant Bartonella henselae Lipoyl synthase (lipA)

Product Code	CSB-YP756700BSG
Relevance	Catalyzes the radical-mediated insertion of two sulfur atoms into the C-6 and C-8 positions of the octanoyl moiety bound to the lipoyl domains of lipoyl-dependent enzymes, thereby converting the octanoylated domains into lipoylated derivatives.
Abbreviation	Recombinant Bartonella henselae lipA protein
Storage	The shelf life is related to many factors, storage state, buffer ingredients, storage temperature and the stability of the protein itself. Generally, the shelf life of liquid form is 6 months at -20°C/-80°C. The shelf life of lyophilized form is 12 months at -20°C/-80°C.
Uniprot No.	Q6G401
Product Type	Recombinant Protein
Immunogen Species	Bartonella henselae (strain ATCC 49882 / DSM 28221 / Houston 1) (Rochalimaea henselae)
Purity	≥ 85% as determined by SDS-PAGE.
Sequence	MVTVVDRVTDRLRHPEKAHRPDTSVQKKPDWIRVKAPTSQVYKETHGIVRA HKLVTVCEEAGCPNIGECWSQRHASFMILGEICTRACAFNCNVATGIPFAVDEN EPERVADAVARMELKHVVITSVDRDDLADGGAEHFVAKVIYAIRRKAPKTTIEVLT PDFRHKDGALEIVVAAKPDVFNHNLETVPSKYLKVRPGARYFHSIRLLQRVKEL DPTIFTKSGIMVGLGEERNEILQLMDDLRSADVDFMTIGQYLQPTRKHHPVIRF VPPEEFESFAKIGKVKGFLHMASNPLTRSSHAGDDFAILQKARDEKFAALQR
Research Area	others
Source	Yeast
Target Names	lipA
Protein Names	Lip-syn
Expression Region	1-320aa
Notes	Repeated freezing and thawing is not recommended. Store working aliquots at 4°C for up to one week.
Tag Info	N-terminal 10xHis-tagged
Mol. Weight	38.7 kDa
Protein Length	Full Length
Image	



(Tris-Glycine gel) Discontinuous SDS-PAGE (reduced) with 5% enrichment gel and 15% separation gel.

Reconstitution

We recommend that this vial be briefly centrifuged prior to opening to bring the contents to the bottom. Please reconstitute protein in deionized sterile water to a concentration of 0.1-1.0 mg/mL. We recommend to add 5-50% of glycerol (final concentration) and aliquot for long-term storage at -20°C/-80°C. Our default final concentration of glycerol is 50%. Customers could use it as reference.

Shelf Life

The shelf life is related to many factors, storage state, buffer ingredients, storage temperature and the stability of the protein itself. Generally, the shelf life of liquid form is 6 months at -20°C/-80°C. The shelf life of lyophilized form is 12 months at -20°C/-80°C.