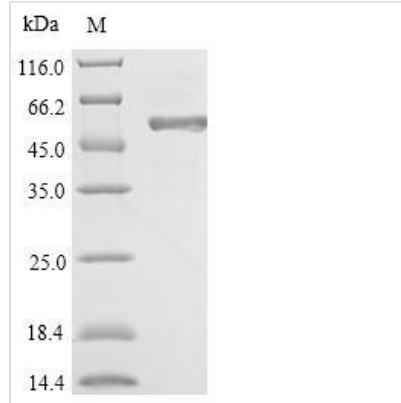


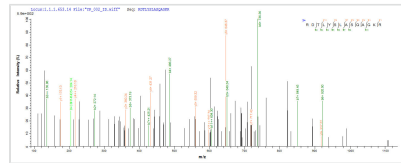


Recombinant Hypocrea rufa Endo-beta-1,6-galactanase (6GAL)

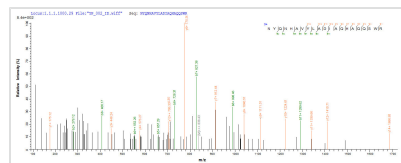
Product Code	CSB-YP762323THZ
Relevance	Hydrolyzes galactooligomers with a degree of polymerization higher than 3. Hydrolyzes radish root arabinogalactan-protein. Does not hydrolyze dextran, arabinan, starch, laminarin, beta-1,4- and beta-1,3-galactans, larch wood arabinogalactan or acid-insoluble polygalacturonic acid.
Abbreviation	Recombinant Hypocrea rufa 6GAL protein
Storage	The shelf life is related to many factors, storage state, buffer ingredients, storage temperature and the stability of the protein itself. Generally, the shelf life of liquid form is 6 months at -20°C/-80°C. The shelf life of lyophilized form is 12 months at -20°C/-80°C.
Uniprot No.	Q76FP5
Product Type	Recombinant Protein
Immunogen Species	Hypocrea rufa (Trichoderma viride)
Purity	≥ 90% as determined by SDS-PAGE.
Sequence	DTTLTIDPTSNWGTWEGWGVSLAWWAKAFGNRDDLASVFFSRNNQAVNGQT LPGLGFNIVRYNAGACSNNSYDGSTMVSPNIKPSRQMDGFWDWASSDPS SSSWNWNVDANQRAMLQKAKANGANIFELFSNSPMWWMCNNHNPSGSGSS DNLQSWNYQNHAVYLAQHAQSWRIQFSVEAFNEPSSSWWTAEGTQE GCHFDVSTMATVIGYLNTELSSRGLSSFVASSDENTYDLAISTWQGFNSSTRNI VKRINVHGYQDGGGRRDTLYSLASQAGKRLWNSEYGDSDASGKSMYQNLLL DFTWLHPTAWVYWQAIDGAGWGLIVGDNDNLTLSSASTKYFVLAQLTRHIRQ GMQILTPDVNTAVAYDAGSQKLIVTANWGSAQTITFDLTRARTAGSNGATV PRWSTQTGGGDQYRSYTDTKINNGKFSASFSSGQVQTFEVSGVVLQ
Research Area	others
Source	Yeast
Target Names	6GAL
Protein Names	Recommended name: Endo-beta-1,6-galactanase EC= 3.2.1.164
Expression Region	21-479aa
Notes	Repeated freezing and thawing is not recommended. Store working aliquots at 4°C for up to one week.
Tag Info	N-terminal 6xHis-tagged
Mol. Weight	52.6kDa
Protein Length	Full Length of Mature Protein
Image	



(Tris-Glycine gel) Discontinuous SDS-PAGE (reduced) with 5% enrichment gel and 15% separation gel.



Based on the SEQUEST from database of Yeast host and target protein, the LC-MS/MS Analysis result of CSB-YP762323THZ could indicate that this peptide derived from Yeast-expressed *Hypocrea rufa* (*Trichoderma viride*) 6GAL.



Based on the SEQUEST from database of Yeast host and target protein, the LC-MS/MS Analysis result of CSB-YP762323THZ could indicate that this peptide derived from Yeast-expressed *Hypocrea rufa* (*Trichoderma viride*) 6GAL.

Reconstitution

We recommend that this vial be briefly centrifuged prior to opening to bring the contents to the bottom. Please reconstitute protein in deionized sterile water to a concentration of 0.1-1.0 mg/mL. We recommend to add 5-50% of glycerol (final concentration) and aliquot for long-term storage at -20°C/-80°C. Our default final concentration of glycerol is 50%. Customers could use it as reference.

Shelf Life

The shelf life is related to many factors, storage state, buffer ingredients, storage temperature and the stability of the protein itself. Generally, the shelf life of liquid form is 6 months at -20°C/-80°C. The shelf life of lyophilized form is 12 months at -20°C/-80°C.