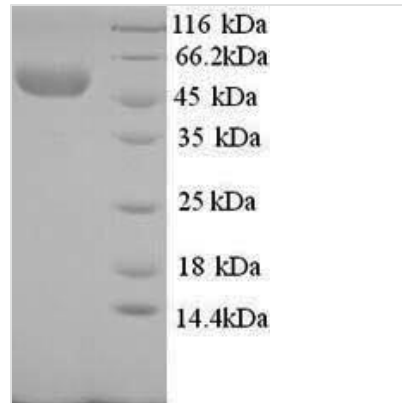




# Recombinant Rabbit E-selectin (SELE), partial

<b>Product Code</b>	CSB-YP020975RB
<b>Relevance</b>	Cell-surface glycoprotein having a role in immunoadhesion. Mediates in the adhesion of blood neutrophils in cytokine-activated endothelium through interaction with PSGL1/SELPLG. May have a role in capillary morphogenesis .
<b>Abbreviation</b>	Recombinant Rabbit SELE protein, partial
<b>Storage</b>	The shelf life is related to many factors, storage state, buffer ingredients, storage temperature and the stability of the protein itself. Generally, the shelf life of liquid form is 6 months at -20°C/-80°C. The shelf life of lyophilized form is 12 months at -20°C/-80°C.
<b>Uniprot No.</b>	P27113
<b>Alias</b>	CD62 antigen-like family member E Endothelial leukocyte adhesion molecule 1 ;ELAM-1 Leukocyte-endothelial cell adhesion molecule 2 ;LECAM2;; CD62E
<b>Product Type</b>	Recombinant Protein
<b>Immunogen Species</b>	Oryctolagus cuniculus (Rabbit)
<b>Purity</b>	≥ 90% as determined by SDS-PAGE.
<b>Sequence</b>	<p>WTYHFS AENMTYDEASAYCQQNYTHLVAIQNKEEIDYLN SILDYSPSYWIGIR  KVNNVWIWVGTHKPLTEGAKNWAPGEPNNKQNNEDCVEIYIKRPKDTGMWN  DERCSK KKLALCYTA ACTEASCSGHGECIETINNY SCKCYPGFSGLKCEQVVT  CEAQVQPQHGSLNCTHPLGNFSYNSSCSVSCERGYLPSSTETTWTCTSSGEW  SAPPATCKVVECDTMGKPANGDVKCSPSQGSAPWNTTCTFDCEEFTLLGA  RSLQCTSSGSWDNEKPTCKAVSCDTIHHPQNGSVSCSNSSSEGKFTFRSSCNF  TCEENFLLRGPAQVECTAQQQWTQQAPVCEAVKCDPVHTLEDGFVKCTHPH  TGEFTYKSSCTFNCREGFELHGSAQLECTSQGQWAQELPSCQVVQCPSLAVL  GKTNVSCSGEPVFGTVCNFACPEGWTLNGSAALMCGAEGQWSGMLPTCEE  PIASNVP</p>
<b>Research Area</b>	Others
<b>Source</b>	Yeast
<b>Target Names</b>	SELE
<b>Protein Names</b>	Recommended name: E-selectin Alternative name(s): CD62 antigen-like family member E Endothelial leukocyte adhesion molecule 1 Short name= ELAM-1 Leukocyte-endothelial cell adhesion molecule 2 Short name= LECAM2 CD_antigen
<b>Expression Region</b>	24-495aa
<b>Notes</b>	Repeated freezing and thawing is not recommended. Store working aliquots at 4°C for up to one week.
<b>Tag Info</b>	N-terminal 6xHis-tagged
<b>Mol. Weight</b>	53.6kDa

**Protein Length****Extracellular Domain****Image**

(Tris-Glycine gel) Discontinuous SDS-PAGE (reduced) with 5% enrichment gel and 15% separation gel.

**Reconstitution**

We recommend that this vial be briefly centrifuged prior to opening to bring the contents to the bottom. Please reconstitute protein in deionized sterile water to a concentration of 0.1-1.0 mg/mL. We recommend to add 5-50% of glycerol (final concentration) and aliquot for long-term storage at -20°C/-80°C. Our default final concentration of glycerol is 50%. Customers could use it as reference.

**Shelf Life**

The shelf life is related to many factors, storage state, buffer ingredients, storage temperature and the stability of the protein itself. Generally, the shelf life of liquid form is 6 months at -20°C/-80°C. The shelf life of lyophilized form is 12 months at -20°C/-80°C.