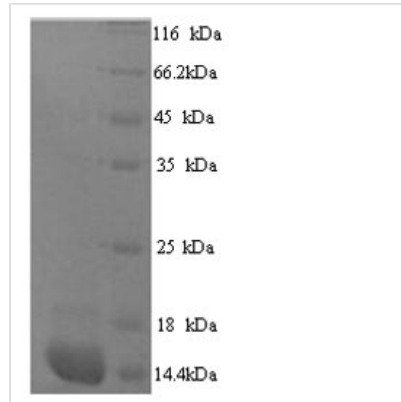




Recombinant Human Protein S100-A7A (S100A7A), partial

Product Code	CSB-YP771423HU
Relevance	May be involved in epidermal differentiation and inflammation and might therefore be important for the pathogenesis of psoriasis and other diseases.
Abbreviation	Recombinant Human S100A7A protein, partial
Storage	The shelf life is related to many factors, storage state, buffer ingredients, storage temperature and the stability of the protein itself. Generally, the shelf life of liquid form is 6 months at -20°C/-80°C. The shelf life of lyophilized form is 12 months at -20°C/-80°C.
Uniprot No.	Q86SG5
Alias	S100 calcium-binding protein A15 S100 calcium-binding protein A7-like 1 S100 calcium-binding protein A7A
Product Type	Recombinant Protein
Immunogen Species	Homo sapiens (Human)
Purity	Greater than 90% as determined by SDS-PAGE.
Sequence	SNTQAERSIIGMIDMFHKYTGRDGKIEKPSLLTMMKENFPNFLSACDKKGIHYL ATVFEKKDKNEDKKIDFSEFLSLLGDIAADYHKQSHGAAPCSGGSQ
Research Area	Cell Biology
Source	Yeast
Target Names	S100A7A
Protein Names	Recommended name: Protein S100-A7A Alternative name(s): S100 calcium-binding protein A15 S100 calcium-binding protein A7-like 1 S100 calcium-binding protein A7A
Expression Region	2-101aa
Notes	Repeated freezing and thawing is not recommended. Store working aliquots at 4°C for up to one week.
Tag Info	N-terminal 6xHis-tagged
Mol. Weight	13.2kDa
Protein Length	Partial

Image



(Tris-Glycine gel) Discontinuous SDS-PAGE (reduced) with 5% enrichment gel and 15% separation gel.

Reconstitution

We recommend that this vial be briefly centrifuged prior to opening to bring the contents to the bottom. Please reconstitute protein in deionized sterile water to a concentration of 0.1-1.0 mg/mL. We recommend to add 5-50% of glycerol (final concentration) and aliquot for long-term storage at $-20^{\circ}\text{C}/-80^{\circ}\text{C}$. Our default final concentration of glycerol is 50%. Customers could use it as reference.

Shelf Life

The shelf life is related to many factors, storage state, buffer ingredients, storage temperature and the stability of the protein itself. Generally, the shelf life of liquid form is 6 months at $-20^{\circ}\text{C}/-80^{\circ}\text{C}$. The shelf life of lyophilized form is 12 months at $-20^{\circ}\text{C}/-80^{\circ}\text{C}$.