



# Recombinant Human BRCA1-associated protein (BRAP)

|                          |   |
|--------------------------|---|
| <b>Product Code</b>      | CSB-YP773793HU  |
| <b>Relevance</b>         | Negatively regulates MAP kinase activation by limiting the formation of Raf/MEK complexes probably by inactivation of the KSR1 scaffold protein. Also acts as a Ras responsive E3 ubiquitin ligase that, on activation of Ras, is modified by auto-polyubiquitination resulting in the release of inhibition of Raf/MEK complex formation. May also act as a Cytoplasmic domain retention protein with a role in regulating nuclear transport.  |
| <b>Abbreviation</b>      | Recombinant Human BRAP protein  |
| <b>Storage</b>           | The shelf life is related to many factors, storage state, buffer ingredients, storage temperature and the stability of the protein itself. Generally, the shelf life of liquid form is 6 months at -20°C/-80°C. The shelf life of lyophilized form is 12 months at -20°C/-80°C.   |
| <b>Uniprot No.</b>       | Q7Z569  |
| <b>Alias</b>             | BRAP2Impedes mitogenic signal propagation ;IMPRING finger protein 52Renal carcinoma antigen NY-REN-63   |
| <b>Product Type</b>      | Recombinant Protein   |
| <b>Immunogen Species</b> | Homo sapiens (Human)  |
| <b>Purity</b>            | Greater than 90% as determined by SDS-PAGE.   |
| <b>Sequence</b>          | MSVSLVVIRLELAEHSPVPAGFGFSAAAGEMSDEEIKKTTLASAVACLEGKSPG<br>EKVAIIHQHLGRREMTDVIIETMKSNDPELKTVEERKSSEASPTAQRSKDHSK<br>ECINAAPDSPSKQLPDQISFFSGNPSVEIVHGIMHLYKTNKMTSLKEDVRRSAM<br>LCILTVPAAMTSHDLMKFVAPFNEVIEQMKIIRDSTPNQYMVLKIFRAQADADSF<br>YMTCNGRQFNSIEDDVCQLVYVERAEVLKSEGDGASLPVMDLTELKCTVCLER<br>MDESVMGILTTLCNHSFHSQCLQRWDDTTCPVCRYCQTPEPVEENKCFECGV<br>QENLWICLICGHIGCGRYVSRHAYKHFEETQHTYAMQLTNHRVWDYAGDNYV<br>HRLVASKTDGKIVQYECEGDTCQEEKIDALQLEYSYLLTSQLESQRIYWENKIV<br>RIEKDTAEEINNMKTKFKETIEKCDNLEHKLNDLLKEKQSVERKCTQLNNTKVAK<br>LTNELKEEQEMNKCLRANQVLLQNKLKEEERVLKETCDQKDLQITEIQEQLRD<br>VMFYLETQQKINHLPAETRQEIQEGQINIAMASASSPASSGGSGKLP SRKGRS<br>KRGK |
| <b>Research Area</b>     | Epigenetics and Nuclear Signaling   |
| <b>Source</b>            | Yeast   |
| <b>Target Names</b>      | BRAP  |
| <b>Protein Names</b>     | Recommended name: BRCA1-associated protein EC= 6.3.2.- Alternative name(s): BRAP2 Impedes mitogenic signal propagation Short name= IMP RING finger protein 52 Renal carcinoma antigen NY-REN-63   |
| <b>Expression Region</b> | 1-592aa   |



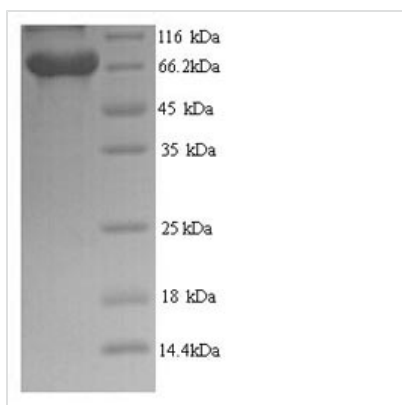
**Notes** Repeated freezing and thawing is not recommended. Store working aliquots at 4°C for up to one week.

**Tag Info** N-terminal 6xHis-tagged

**Mol. Weight** 69.3kDa

**Protein Length** Full Length

**Image**



(Tris-Glycine gel) Discontinuous SDS-PAGE (reduced) with 5% enrichment gel and 15% separation gel.

**Reconstitution** We recommend that this vial be briefly centrifuged prior to opening to bring the contents to the bottom. Please reconstitute protein in deionized sterile water to a concentration of 0.1-1.0 mg/mL. We recommend to add 5-50% of glycerol (final concentration) and aliquot for long-term storage at -20°C/-80°C. Our default final concentration of glycerol is 50%. Customers could use it as reference.

**Shelf Life** The shelf life is related to many factors, storage state, buffer ingredients, storage temperature and the stability of the protein itself. Generally, the shelf life of liquid form is 6 months at -20°C/-80°C. The shelf life of lyophilized form is 12 months at -20°C/-80°C.