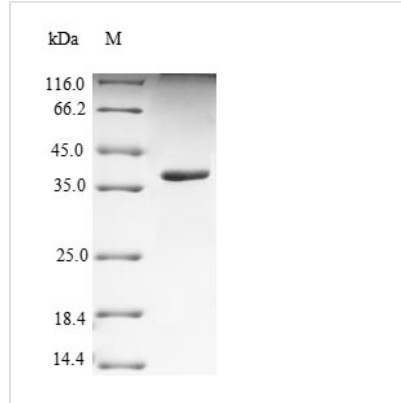




Recombinant Human Nectin-4 (NECTIN4), partial

Product Code	CSB-YP822274HU
Relevance	Ses to be involved in cell adhesion through trans-homophilic and -heterophilic interactions, the latter including specifically interactions with PVRL2/nectin-1. Does not act as receptor for alpha-herpesvirus entry into cells.
Abbreviation	Recombinant Human PVRL4 protein, partial
Storage	The shelf life is related to many factors, storage state, buffer ingredients, storage temperature and the stability of the protein itself. Generally, the shelf life of liquid form is 6 months at -20°C/-80°C. The shelf life of lyophilized form is 12 months at -20°C/-80°C.
Uniprot No.	Q96NY8
Alias	Ig superfamily receptor LNIRPoliovirus receptor-related protein 4
Product Type	Recombinant Protein
Immunogen Species	Homo sapiens (Human)
Purity	≥ 90% as determined by SDS-PAGE.
Sequence	GELETSDVVTVVLGQDAKLPCFYRGDSGEQVGVQVAWARVDAGEGAQELALL HSKYGLHVSPAYEGRVEQPPPPRNPLDGSVLLRNAVQADEGEYECRVSTFPA GSFQARLRVLPPLPSLNPGPALEEGQGLTLAASCTAEGSPAPSVTWDTEV KGTSSRSFKHSRSAAVTSEFHLVPSRSMNGQPLTCVVSHPGLLQDQRITHIL HVSFLAEASVRGLEDQNLWHIGREGAMKCLSEGQPPPSYNWTRLDGPLPSG VRVDGDTLGFPLTTEHSGIYVCHVSNEFSSRDSQVTVDLDPQEDSGKQVD LVSAS
Research Area	Cell Adhesion
Source	Yeast
Target Names	NECTIN4
Protein Names	Recommended name: Poliovirus receptor-related protein 4 Alternative name(s): Ig superfamily receptor LNIR Nectin-4 Cleaved into the following chain: 1. Processed poliovirus receptor-related protein 4
Expression Region	32-349aa
Notes	Repeated freezing and thawing is not recommended. Store working aliquots at 4°C for up to one week.
Tag Info	N-terminal 6xHis-tagged
Mol. Weight	36.1kDa
Protein Length	Partial
Image	



(Tris-Glycine gel) Discontinuous SDS-PAGE (reduced) with 5% enrichment gel and 15% separation gel.

Reconstitution

We recommend that this vial be briefly centrifuged prior to opening to bring the contents to the bottom. Please reconstitute protein in deionized sterile water to a concentration of 0.1-1.0 mg/mL. We recommend to add 5-50% of glycerol (final concentration) and aliquot for long-term storage at -20°C/-80°C. Our default final concentration of glycerol is 50%. Customers could use it as reference.

Shelf Life

The shelf life is related to many factors, storage state, buffer ingredients, storage temperature and the stability of the protein itself. Generally, the shelf life of liquid form is 6 months at -20°C/-80°C. The shelf life of lyophilized form is 12 months at -20°C/-80°C.