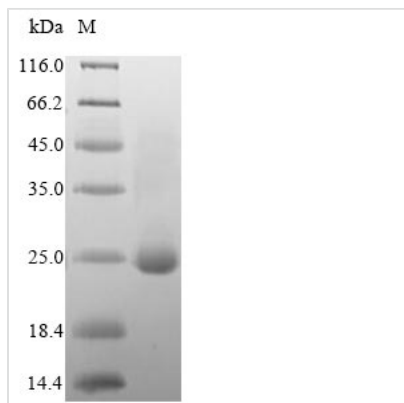




# Recombinant Human Deducator of cytokinesis protein 8 (DOCK8), partial

<b>Product Code</b>	CSB-YP836734HU
<b>Relevance</b>	Potential guanine nucleotide exchange factor (GEF). GEF proteins activate some small GTPases by exchanging bound GDP for free GTP. Is involved in NK cell cytotoxicity by controlling polarization of microtubule-organizing center (MTOC), and possibly regulating CCDC88B-mediated lytic granule transport to MTOC during cell killing
<b>Abbreviation</b>	Recombinant Human DOCK8 protein, partial
<b>Storage</b>	The shelf life is related to many factors, storage state, buffer ingredients, storage temperature and the stability of the protein itself. Generally, the shelf life of liquid form is 6 months at -20°C/-80°C. The shelf life of lyophilized form is 12 months at -20°C/-80°C.
<b>Uniprot No.</b>	Q8NF50
<b>Product Type</b>	Recombinant Protein
<b>Immunogen Species</b>	Homo sapiens (Human)
<b>Purity</b>	Greater than 85% as determined by SDS-PAGE.
<b>Sequence</b>	RNLLYVYPQRLNLFVNKLASARNITIKIQFMCGEDASNAMPVIFGKSSGPEFLQE VYTAVTYHNKSPDFYEEVKIKLPAKLTVNHHLLFTFYHISCQQKQGASVETLLG YSWLPILLNERLQTGSYCLPVALEKLPPNYSMHSAEKVPLQNPPIKWAEGHKG VFNIEVQAV
<b>Research Area</b>	others
<b>Source</b>	Yeast
<b>Target Names</b>	DOCK8
<b>Protein Names</b>	Recommended name: Deducator of cytokinesis protein 8
<b>Expression Region</b>	560-729aa
<b>Notes</b>	Repeated freezing and thawing is not recommended. Store working aliquots at 4°C for up to one week.
<b>Tag Info</b>	N-terminal 6xHis-tagged
<b>Mol. Weight</b>	21.3kDa
<b>Protein Length</b>	Partial
<b>Image</b>	



(Tris-Glycine gel) Discontinuous SDS-PAGE (reduced) with 5% enrichment gel and 15% separation gel.

### Reconstitution

We recommend that this vial be briefly centrifuged prior to opening to bring the contents to the bottom. Please reconstitute protein in deionized sterile water to a concentration of 0.1-1.0 mg/mL. We recommend to add 5-50% of glycerol (final concentration) and aliquot for long-term storage at -20°C/-80°C. Our default final concentration of glycerol is 50%. Customers could use it as reference.

### Shelf Life

The shelf life is related to many factors, storage state, buffer ingredients, storage temperature and the stability of the protein itself. Generally, the shelf life of liquid form is 6 months at -20°C/-80°C. The shelf life of lyophilized form is 12 months at -20°C/-80°C.