

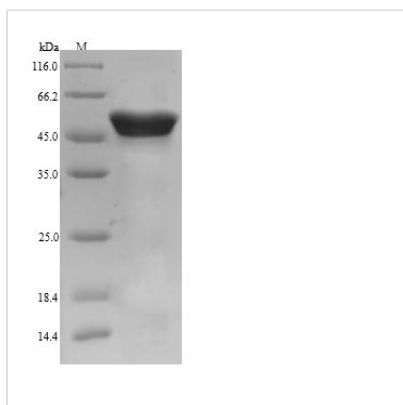


Recombinant Pig Calreticulin (CALR)

Product Code	CSB-YP004458PI
Relevance	Calcium-binding chaperone that promotes folding, oligomeric assembly and quality control in the endoplasmic reticulum (ER) via the calreticulin/calnexin cycle. This lectin interacts transiently with almost all of the monoglucosylated glycoproteins that are synthesized in the ER. Interacts with the DNA-binding domain of NR3C1 and mediates its nuclear export (By similarity). Involved in maternal gene expression regulation. May participate in oocyte maturation via the regulation of calcium homeostasis.
Abbreviation	Recombinant Pig CALR protein
Storage	The shelf life is related to many factors, storage state, buffer ingredients, storage temperature and the stability of the protein itself. Generally, the shelf life of liquid form is 6 months at -20°C/-80°C. The shelf life of lyophilized form is 12 months at -20°C/-80°C.
Uniprot No.	P28491
Alias	Alternative name(s):CRP55;Calregulin;Endoplasmic reticulum resident protein 60 Short name:ERp60 HACBP
Product Type	Recombinant Protein
Immunogen Species	Sus scrofa (Pig)
Purity	Greater than 90% as determined by SDS-PAGE.
Sequence	EPTIYFKEQFLDGDGWTDRWIESKHKPDFGRFVLSSGKFYGDQEKDKGLQTS QDARFYALSARFEPFSNKGQTLVVQFTVKHEQNIDCGGGYVKLFPDGLDQTD MHGDSEYNIMFGPDICGPGTKKVHVIFNYKGNVLINKDIRCKDDEFTHLYTLIV RPDNTYEVKIDNSQVESGSLEDDWDFLPPKKIKDPDAVKPEDWDERAKIDDPT DSKPEDWDKPEHIPDPDAKKPEDWDEEMDGEWEPPVIQNPEYKGEWKPRQI DNPDYKGTWIHPEIDNPEYSPDSNIYAYENFAVLGLDLWQVKSQTIFDNFLITN DEAYAEFFGNETWGVTKAAEKQMKDKQDEEQRLKEEEEEKRRKEEEEVDKE DEEDKDEDEEEDEKEEEEEEDAAAGQAKDEL
Research Area	Tags & Cell Markers
Source	Yeast
Target Names	CALR
Protein Names	Recommended name: Calreticulin Alternative name(s): CRP55 Calregulin Endoplasmic reticulum resident protein 60 Short name= ERp60 HACBP
Expression Region	18-417aa
Notes	Repeated freezing and thawing is not recommended. Store working aliquots at 4°C for up to one week.
Tag Info	N-terminal 6xHis-tagged
Mol. Weight	48.6kDa
Protein Length	Full Length of Mature Protein



Image



(Tris-Glycine gel) Discontinuous SDS-PAGE (reduced) with 5% enrichment gel and 15% separation gel.

Reconstitution

We recommend that this vial be briefly centrifuged prior to opening to bring the contents to the bottom. Please reconstitute protein in deionized sterile water to a concentration of 0.1-1.0 mg/mL. We recommend to add 5-50% of glycerol (final concentration) and aliquot for long-term storage at -20°C/-80°C. Our default final concentration of glycerol is 50%. Customers could use it as reference.

Shelf Life

The shelf life is related to many factors, storage state, buffer ingredients, storage temperature and the stability of the protein itself.

Generally, the shelf life of liquid form is 6 months at -20°C/-80°C. The shelf life of lyophilized form is 12 months at -20°C/-80°C.