



Recombinant Human Twinkle mtDNA helicase (TWNK)

| | |
|--------------------------|---|
| Product Code | CSB-YP842754HU |
| Relevance | Involved in mitochondrial DNA (mtDNA) metabolism. Could function as an adenine nucleotide-dependent DNA helicase. Function inferred to be critical for lifetime maintenance of mtDNA integrity. In vitro, forms in combination with POLG, a processive replication machinery, which can use double-stranded DNA (dsDNA) as tplate to synthesize single-stranded DNA (ssDNA) molecules. May be a key regulator of mtDNA copy number in mammals. |
| Abbreviation | Recombinant Human TWNK protein |
| Storage | The shelf life is related to many factors, storage state, buffer ingredients, storage temperature and the stability of the protein itself. Generally, the shelf life of liquid form is 6 months at -20°C/-80°C. The shelf life of lyophilized form is 12 months at -20°C/-80°C. |
| Uniprot No. | Q96RR1 |
| Product Type | Recombinant Proteins |
| Immunogen Species | Homo sapiens (Human) |
| Purity | ≥ 90% as determined by SDS-PAGE. |
| Sequence | <p>APGPPRRRYRKETLQALDMPVLPVTATEIRQYLRGHGIPFQDGHSCLRALSPF AESSQLKGQGTGVTTTSFSLFIDKTTGHFLCMTSLAEGSWEDFQASVEGRGDGA REGFLLSKAPEFEDSEEVRRRIWNRAIPLWELPDQEEVQLADTMFGLTKVTD LKRFSVRYLRPARSLVFPWFSPGGSLRGLKLEAKCQGDGVSYEETIIPRPS AYHNLFGPLISRRAEVVLT SRELDLALNQSTGLPTLTLPRGTTCLPPALLPY LEQFRRIVFWLGDDLRSWEAAKLFARKLNPKRCFLVRPGDQQPRPLEALNGG FNLSRILRTALPAWHKSIVSFRQLREEVLGELSNVEQAAGLRWSRFPDLNRILK GHRKGELTVFTGPTGSGKTTFISEYALDLC SQGVNTLWGSFEISNVRLARVML TQFAEGRLEDQLDKYDHWADRFEDLPLYFMTFHGQQSIRTVIDTMQHAVYVY DICHVIIDNLQFMMGHEQLSTDRIAAQDYIIGVFRKFATDNNCHVTLVIHPRKED DDKELQTASIFGSAKASQEADNVLILQDRKLVTPGPKRYLQVSKNRFDGDVGV FPLEFNKNSLTF SIPPKNKARLKKIKDDTGPVAKKPSSGKKGATTQNSEICSGQ APTPDQPDTSKRSK</p> |
| Research Area | Epigenetics and Nuclear Signaling |
| Source | Yeast |
| Target Names | TWNK |
| Protein Names | Recommended name: Twinkle protein, mitochondrial EC= 3.6.4.12 Alternative name(s): Progressive external ophthalmoplegia 1 protein T7 gp4-like protein with intramitochondrial nucleoid localization T7-like mitochondrial DNA helicase |
| Expression Region | 32-684aa |
| Notes | Repeated freezing and thawing is not recommended. Store working aliquots at |



4°C for up to one week.

Tag Info

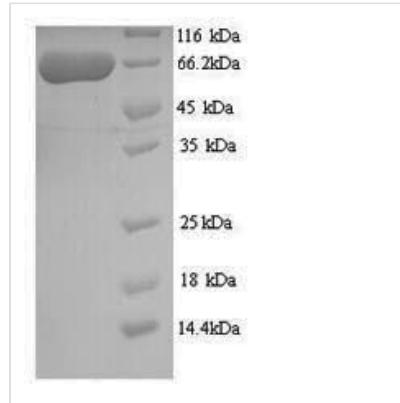
N-terminal 6xHis-tagged

Mol. Weight

75.5kDa

Protein Length

Full Length of Mature Protein

Image

(Tris-Glycine gel) Discontinuous SDS-PAGE (reduced) with 5% enrichment gel and 15% separation gel.

Shelf Life

The shelf life is related to many factors, storage state, buffer ingredients, storage temperature and the stability of the protein itself.

Generally, the shelf life of liquid form is 6 months at -20°C/-80°C. The shelf life of lyophilized form is 12 months at -20°C/-80°C.