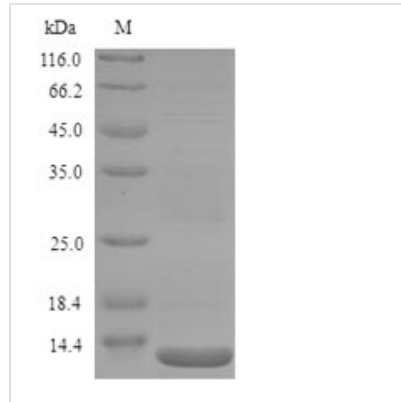




Recombinant Salmonella typhi LPS-assembly protein LptD (lptD), partial

Product Code	CSB-YP845655SWW
Relevance	Together with LptE, is involved in the assembly of lipopolysaccharide (LPS) at the surface of the outer membrane.
Abbreviation	Recombinant Salmonella typhi lptD protein, partial
Storage	The shelf life is related to many factors, storage state, buffer ingredients, storage temperature and the stability of the protein itself. Generally, the shelf life of liquid form is 6 months at -20°C/-80°C. The shelf life of lyophilized form is 12 months at -20°C/-80°C.
Uniprot No.	Q8Z9J6
Product Type	Recombinant Protein
Immunogen Species	Salmonella typhi
Purity	≥ 90% as determined by SDS-PAGE.
Sequence	VDIMQGNSRLQADEVQLHQKQAEGQPEPVRTVDALGNVHYDDNQVILKGPKG WANLNTKDTNVWEGDYQMVGRQGRGKADLMKQRGENRYTILENGS
Research Area	Others
Source	Yeast
Target Names	lptD
Protein Names	Recommended name: LPS-assembly protein lptD Alternative name(s): Organic solvent tolerance protein
Expression Region	73-169aa
Notes	Repeated freezing and thawing is not recommended. Store working aliquots at 4°C for up to one week.
Tag Info	N-terminal 6xHis-tagged
Mol. Weight	12.9kDa
Protein Length	Partial
Image	



(Tris-Glycine gel) Discontinuous SDS-PAGE (reduced) with 5% enrichment gel and 15% separation gel.

Reconstitution

We recommend that this vial be briefly centrifuged prior to opening to bring the contents to the bottom. Please reconstitute protein in deionized sterile water to a concentration of 0.1-1.0 mg/mL. We recommend to add 5-50% of glycerol (final concentration) and aliquot for long-term storage at -20°C/-80°C. Our default final concentration of glycerol is 50%. Customers could use it as reference.

Shelf Life

The shelf life is related to many factors, storage state, buffer ingredients, storage temperature and the stability of the protein itself. Generally, the shelf life of liquid form is 6 months at -20°C/-80°C. The shelf life of lyophilized form is 12 months at -20°C/-80°C.