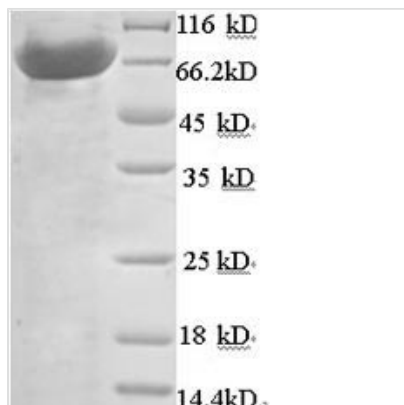


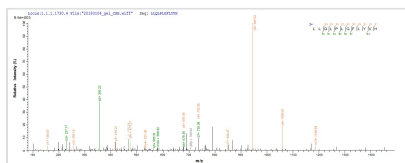


Recombinant Human N-acetylmuramoyl-L-alanine amidase (PGLYRP2)

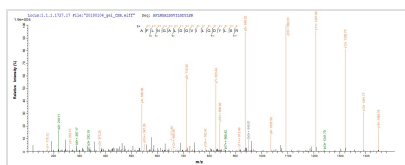
Product Code	CSB-EP846684HU
Relevance	May play a scavenger role by digesting biologically active peptidoglycan (PGN) into biologically inactive fragments. Has no direct bacteriolytic activity.
Abbreviation	Recombinant Human PGLYRP2 protein
Storage	The shelf life is related to many factors, storage state, buffer ingredients, storage temperature and the stability of the protein itself. Generally, the shelf life of liquid form is 6 months at -20°C/-80°C. The shelf life of lyophilized form is 12 months at -20°C/-80°C.
Uniprot No.	Q96PD5
Alias	Peptidoglycan recognition protein 2;Peptidoglycan recognition protein long ;PGRP-L
Product Type	Recombinant Protein
Immunogen Species	Homo sapiens (Human)
Purity	Greater than 90% as determined by SDS-PAGE.
Sequence	SLPLLMDSVIQALAELEQKVPAKTRHTASAWLMSAPNSGPHNRLYHFLLGAW SLNATELDPCPLSPELLGLTKEVARHVDVREGKEYGVVLAPDGGSTVAVEPLLAG LEAGLQGRRVINLPLDSMAAPWETGDTFPDVVAIAPDVRATSSPGLRDGSPDV TTADIGANTPDATKGCPDVQASLPDAKAKSPPTMVDSLLAVTLAGNLGLTFLR GSQTQSHPD LGTEGCWDQLSAPRTFTLLDPKASLLTMAFLNGALDGVILGDYL SRTPEPRPSLSHLLSQYYGAGVARDPGFRSNFRRQNGAALTSASILAQQVWG TLVLLQRLEPVHLQLQCMSQEQLAQAANATKEFTEAFLGCPAIHPRCRWGA APYRGRP KLLQLPLGFLYVHHTYVPAPPCTDFTRCAANMRSMQRYHQDTQG WGDIGYSFVVGSDGYVYEGRGWHWVGAHTLGHNSRFGVVAIVGNNTAALPT EALRTVRDTLPSCAVRAGLLRPDYALLGHRQLVRTDCPGDALFDLLRTWPHF TATVKPRPARSVSKRSRREPPPRTLPATDLQ
Research Area	Immunology
Source	E.coli
Target Names	PGLYRP2
Expression Region	22-576aa
Notes	Repeated freezing and thawing is not recommended. Store working aliquots at 4°C for up to one week.
Tag Info	N-terminal 6xHis-SUMO-tagged
Mol. Weight	76.0kDa
Protein Length	Full Length of Mature Protein
Image	



(Tris-Glycine gel) Discontinuous SDS-PAGE (reduced) with 5% enrichment gel and 15% separation gel.



Based on the SEQUEST from database of E.coli host and target protein, the LC-MS/MS Analysis result of CSB-EP846684HU could indicate that this peptide derived from E.coli-expressed Homo sapiens (Human) PGLYRP2.



Based on the SEQUEST from database of E.coli host and target protein, the LC-MS/MS Analysis result of CSB-EP846684HU could indicate that this peptide derived from E.coli-expressed Homo sapiens (Human) PGLYRP2.

Reconstitution

We recommend that this vial be briefly centrifuged prior to opening to bring the contents to the bottom. Please reconstitute protein in deionized sterile water to a concentration of 0.1-1.0 mg/mL. We recommend to add 5-50% of glycerol (final concentration) and aliquot for long-term storage at -20°C/-80°C. Our default final concentration of glycerol is 50%. Customers could use it as reference.

Shelf Life

The shelf life is related to many factors, storage state, buffer ingredients, storage temperature and the stability of the protein itself. Generally, the shelf life of liquid form is 6 months at -20°C/-80°C. The shelf life of lyophilized form is 12 months at -20°C/-80°C.