



Recombinant Mouse Cystathionine beta-synthase (Cbs)

Product Code	CSB-YP849665MO
Relevance	Hydro-lyase catalyzing the first step of the transsulfuration pathway, where the hydroxyl group of L-serine is displaced by L-homocysteine in a beta-replacement reaction to form L-cystathionine, the precursor of L-cysteine. This catabolic route allows the elimination of L-methionine and the toxic metabolite L-homocysteine (By similarity). Also involved in the production of hydrogen sulfide, a gasotransmitter with signaling and cytoprotective effects on neurons
Abbreviation	Recombinant Mouse Cbs protein
Storage	The shelf life is related to many factors, storage state, buffer ingredients, storage temperature and the stability of the protein itself. Generally, the shelf life of liquid form is 6 months at -20°C/-80°C. The shelf life of lyophilized form is 12 months at -20°C/-80°C.
Uniprot No.	Q91WT9
Alias	Beta-thionase Serine sulfhydrase
Product Type	Recombinant Protein
Immunogen Species	Mus musculus (Mouse)
Purity	Greater than 90% as determined by SDS-PAGE.
Sequence	PSGTSQCEDGSAGGFQHLDMHSEKRQLEKGPSGDKDRVWIRPDTPSRCTW QLGRAMADSPHYHTVLTKSPKILPDILRKIGNTPMVRINKISKNAGLKCELLAKC EFFNAGGSVKDRISLRMIEDAERAGNLKPGDTIIEPTSGNTGIGLALAAVKGY RCIIVMPEKMSMEKVDVLRALGAEIVRTPTNARFDSPESHVGVAVRLKNEIPN SHILDQYRNASNPLAHYDDTAEIILQQCDGKLDMLVASAGTGGTITGIARKLKE KCPGCKIIGVDPEGSILAEPEELNQEQTAYEVEGIGYDFIPTVLDRVAVDKWF KSNDEDSFAFARMLIAQEGLLCGGSSGSAMAVAVKAARELQEGQRCVVILPD SVRNYMSKFLSDKWMLQKGFMEELSVKRPWWWRLRVQELSLSAPLTVLPT VTCEDTAILREKGFQAPVNVESGAILGMVTLGNMLSSLLAGKVRPSDEVCKV LYKQFKPIHLTDTLGLTSHILEMDHFALVVHEQIQSRDQAWSGVVGPTDCSN GMSSKQQMVFGVVTAIDLLNFVAAREQTQT
Research Area	Cancer
Source	Yeast
Target Names	Cbs
Protein Names	Recommended name: Cystathionine beta-synthase EC= 4.2.1.22 Alternative name(s): Beta-thionase Serine sulfhydrase
Expression Region	2-561aa
Notes	Repeated freezing and thawing is not recommended. Store working aliquots at 4°C for up to one week.

**Tag Info**

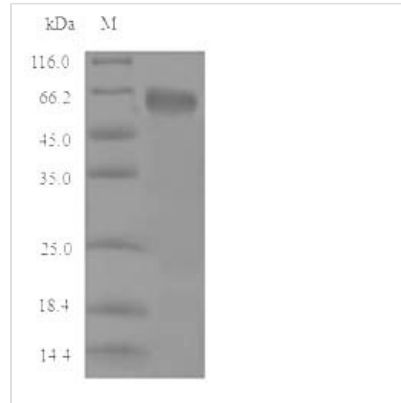
N-terminal 6xHis-tagged

Mol. Weight

63.4kDa

Protein Length

Full Length of Mature Protein

Image

(Tris-Glycine gel) Discontinuous SDS-PAGE (reduced) with 5% enrichment gel and 15% separation gel.

Reconstitution

We recommend that this vial be briefly centrifuged prior to opening to bring the contents to the bottom. Please reconstitute protein in deionized sterile water to a concentration of 0.1-1.0 mg/mL. We recommend to add 5-50% of glycerol (final concentration) and aliquot for long-term storage at -20°C/-80°C. Our default final concentration of glycerol is 50%. Customers could use it as reference.

Shelf Life

The shelf life is related to many factors, storage state, buffer ingredients, storage temperature and the stability of the protein itself.

Generally, the shelf life of liquid form is 6 months at -20°C/-80°C. The shelf life of lyophilized form is 12 months at -20°C/-80°C.