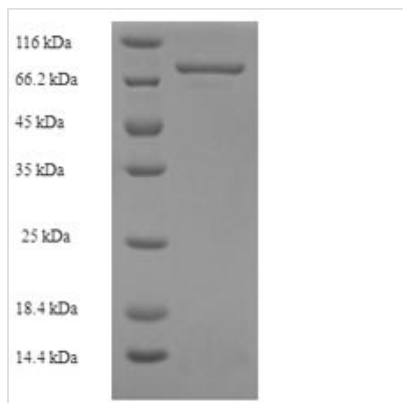




# Recombinant Human Mixed lineage kinase domain-like protein (MLKL)

<b>Product Code</b>	CSB-EP850851HU
<b>Relevance</b>	Pseudokinase that plays a key role in TNF-induced necroptosis, a programmed cell death process. Activated following phosphorylation by RIPK3, leading to homotrimerization, localization to the plasma mbrane and execution of programmed necrosis characterized by calcium influx and plasma mbrane damage. Does not have protein kinase activity.
<b>Abbreviation</b>	Recombinant Human MLKL protein
<b>Storage</b>	The shelf life is related to many factors, storage state, buffer ingredients, storage temperature and the stability of the protein itself. Generally, the shelf life of liquid form is 6 months at -20°C/-80°C. The shelf life of lyophilized form is 12 months at -20°C/-80°C.
<b>Uniprot No.</b>	Q8NB16
<b>Product Type</b>	Recombinant Protein
<b>Immunogen Species</b>	Homo sapiens (Human)
<b>Purity</b>	Greater than 90% as determined by SDS-PAGE.
<b>Sequence</b>	MENLKHIIITLGQVIHKRCEEMKYCKKQCRRRLGHRVLGLIKPLEMLQDQGKRSV PSEKLTAMNRFKAAL EEANGEIEKFSNRSNICRFLTASQDKILFKDVNRKLS VWKELSLLLQVEQRMPVSPISQGASWAQEDQQDAEDRRAFQMLRRDNEKI EASLRRLEINMKEIKETLRQYLPPKCMQEIPQEIQEIKKEQLSGSPWILLRENE VSTLYKGEYHRAPVAIKVFKKLQAGSIAIVRQTFNKEIKTMKKFESPNILRIFGICI DETVTPPQFSIVMEYCELGTLRELLDREKDLTLGKRMVLVLGAARGLYRLHHS EAPELHGKIRSSNFLVTQGYQVKLAGFELRKTQTSMSLGTTRKTDTRVKSTAY LSPQELEDVFYQYDVKSEIYSFGIVLWEIATGDIPFQGCNSEKIRKLVAVKRQQ EPLGEDCPSELREIIDECRAHDPSVRPSVDEILKKLSTFSK
<b>Research Area</b>	Signal Transduction
<b>Source</b>	E.coli
<b>Target Names</b>	MLKL
<b>Expression Region</b>	1-471aa
<b>Notes</b>	Repeated freezing and thawing is not recommended. Store working aliquots at 4°C for up to one week.
<b>Tag Info</b>	N-terminal 6xHis-SUMO-tagged
<b>Mol. Weight</b>	70.5kDa
<b>Protein Length</b>	Full Length
<b>Image</b>	



(Tris-Glycine gel) Discontinuous SDS-PAGE (reduced) with 5% enrichment gel and 15% separation gel.

### Reconstitution

We recommend that this vial be briefly centrifuged prior to opening to bring the contents to the bottom. Please reconstitute protein in deionized sterile water to a concentration of 0.1-1.0 mg/mL. We recommend to add 5-50% of glycerol (final concentration) and aliquot for long-term storage at -20°C/-80°C. Our default final concentration of glycerol is 50%. Customers could use it as reference.

### Shelf Life

The shelf life is related to many factors, storage state, buffer ingredients, storage temperature and the stability of the protein itself. Generally, the shelf life of liquid form is 6 months at -20°C/-80°C. The shelf life of lyophilized form is 12 months at -20°C/-80°C.