



# Recombinant Human E3 ubiquitin-protein ligase MYLIP (MYLIP)

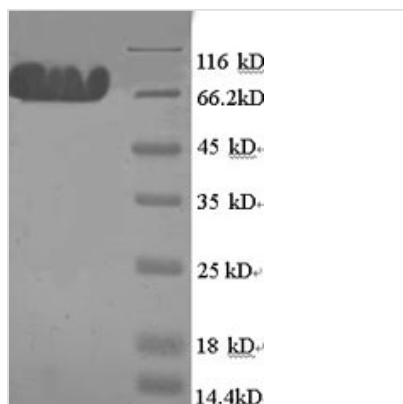
<b>Product Code</b>	CSB-EP855506HU
<b>Relevance</b>	E3 ubiquitin-protein ligase that mediates ubiquitination and subsequent proteasomal degradation of myosin regulatory light chain (MRLC), LDLR, VLDLR and LRP8. Activity depends on E2 enzymes of the UBE2D family. Proteasomal degradation of MRLC leads to inhibit neurite outgrowth in presence of NGF by counteracting the stabilization of MRLC by saposin-like protein (CNPY2/MSAP) and reducing CNPY2-stimulated neurite outgrowth. Acts as a sterol-dependent inhibitor of cellular cholesterol uptake by mediating ubiquitination and subsequent degradation of LDLR.
<b>Abbreviation</b>	Recombinant Human MYLIP protein
<b>Storage</b>	The shelf life is related to many factors, storage state, buffer ingredients, storage temperature and the stability of the protein itself. Generally, the shelf life of liquid form is 6 months at -20°C/-80°C. The shelf life of lyophilized form is 12 months at -20°C/-80°C.
<b>Uniprot No.</b>	Q8WY64
<b>Alias</b>	Inducible degrader of the LDL-receptor ;IdolMyosin regulatory light chain interacting protein ;MIR
<b>Product Type</b>	Recombinant Protein
<b>Immunogen Species</b>	Homo sapiens (Human)
<b>Purity</b>	≥ 90% as determined by SDS-PAGE.
<b>Sequence</b>	MLCYVTRPDAVLMEVEVEAKANGEDCLNQVCRRLGIIEDYFGLQFTGSKGES LWLNLRNRISQQMDGLAPYRLKLRVKFFVEPHLILQEQRHIFFLHIKEALLAGH LLCSPEQAVELSALLAQTKEFGDYNQNTAKYNYEELCAKELSSATLNSIVAKHKE LEGTSQASAEYQVLQIVSAMENYGIWHSVRDSEGQKLLIGVGPESISICKDDF SPINRIAYPVVQMATQSGKNVYLTVTKESGNSIVLLFKMISTRAASGLYRAITET HAFYRCDTVTSVMMQYSRDLKGHSLFLNENINLGKKYVFDIKRTSKEVYD HARRALYNAGVVDLVSRRNQSPLKSSSESSMNCSSCEGLSCQQTRVLQ EKLRKLKEAMLCMVCCEEEINSTFCPCGHTVCCESCAAQLQSCPVCRSRVEH VQHVYLPHTHTSLLNLTVI
<b>Research Area</b>	Epigenetics and Nuclear Signaling
<b>Source</b>	E.coli
<b>Target Names</b>	MYLIP
<b>Expression Region</b>	1-445aa
<b>Notes</b>	Repeated freezing and thawing is not recommended. Store working aliquots at 4°C for up to one week.
<b>Tag Info</b>	N-terminal GST-tagged



**Mol. Weight** 76.9kDa

**Protein Length** Full Length

**Image**



(Tris-Glycine gel) Discontinuous SDS-PAGE (reduced) with 5% enrichment gel and 15% separation gel.

**Reconstitution**

We recommend that this vial be briefly centrifuged prior to opening to bring the contents to the bottom. Please reconstitute protein in deionized sterile water to a concentration of 0.1-1.0 mg/mL. We recommend to add 5-50% of glycerol (final concentration) and aliquot for long-term storage at -20°C/-80°C. Our default final concentration of glycerol is 50%. Customers could use it as reference.

**Shelf Life**

The shelf life is related to many factors, storage state, buffer ingredients, storage temperature and the stability of the protein itself. Generally, the shelf life of liquid form is 6 months at -20°C/-80°C. The shelf life of lyophilized form is 12 months at -20°C/-80°C.