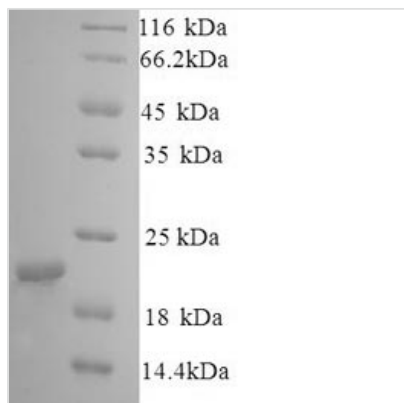




Recombinant Dog Caveolin-1 (CAV1)

Product Code	CSB-YP004571DO
Relevance	Involved in the costimulatory signal essential for T-cell receptor (TCR)-mediated T-cell activation. Its binding to DPP4 induces T-cell proliferation and NF-kappa-B activation in a T-cell receptor/CD3-dependent manner. May act as a scaffolding protein within caveolar mbranes. Interacts directly with G-protein alpha subunits and can functionally regulate their activity. Recruits CTNNB1 to caveolar mbranes and may regulate CTNNB1-mediated signaling through the Wnt pathway.
Abbreviation	Recombinant Dog CAV1 protein
Storage	The shelf life is related to many factors, storage state, buffer ingredients, storage temperature and the stability of the protein itself. Generally, the shelf life of liquid form is 6 months at -20°C/-80°C. The shelf life of lyophilized form is 12 months at -20°C/-80°C.
Uniprot No.	P33724
Alias	Vesicular integral-membrane protein VIP21
Product Type	Recombinant Protein
Immunogen Species	Canis lupus familiaris (Dog) (Canis familiaris)
Purity	Greater than 90% as determined by SDS-PAGE.
Sequence	MSGGKYVDSEGHLYTVPIREQGNIYKPNNKAMAEEMSEKQVYDAHTKEIDLVN RDPKHLNDDVVKIDFEDVIAEPEGTHSFDGIWKASFTTFTVTKYWFYRLLSALF GIPMALIWGIYFAILSFLHIWAVVPCIKSFLIEIQCISRVYSIYVHTFCDPFFEAVGK IFSNIRINMQKET
Research Area	Others
Source	Yeast
Target Names	CAV1
Protein Names	Recommended name: Caveolin-1 Alternative name(s): Vesicular integral-membrane protein VIP21
Expression Region	1-178a
Notes	Repeated freezing and thawing is not recommended. Store working aliquots at 4°C for up to one week.
Tag Info	N-terminal 6xHis-tagged
Mol. Weight	22.6kDa
Protein Length	Full Length

Image



(Tris-Glycine gel) Discontinuous SDS-PAGE (reduced) with 5% enrichment gel and 15% separation gel.

Reconstitution

We recommend that this vial be briefly centrifuged prior to opening to bring the contents to the bottom. Please reconstitute protein in deionized sterile water to a concentration of 0.1-1.0 mg/mL. We recommend to add 5-50% of glycerol (final concentration) and aliquot for long-term storage at -20°C/-80°C. Our default final concentration of glycerol is 50%. Customers could use it as reference.

Shelf Life

The shelf life is related to many factors, storage state, buffer ingredients, storage temperature and the stability of the protein itself. Generally, the shelf life of liquid form is 6 months at -20°C/-80°C. The shelf life of lyophilized form is 12 months at -20°C/-80°C.