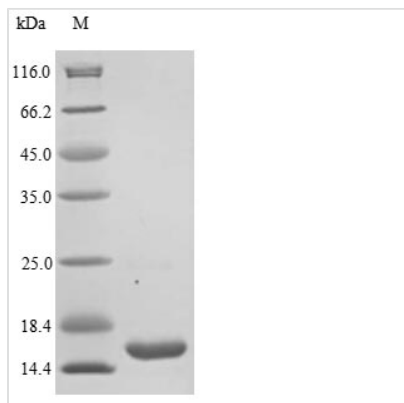


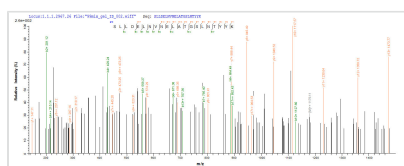


Recombinant Staphylococcus aureus Staphylococcal complement inhibitor (scn)

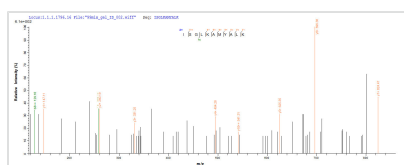
Product Code	CSB-YP858805SKY
Relevance	Involved in countering the first line of host defense mechanisms. Efficiently inhibits opsonization, phagocytosis and killing of S.aureus by human neutrophils. Acts by binding and stabilizing human C3 convertases (C4b2a and C3bBb), leading to their inactivation. The convertases are no longer able to cleave complement C3, therefore preventing further C3b deposition on the bacterial surface and phagocytosis of the bacterium. Also prevents C5a-induced neutrophil responses
Abbreviation	Recombinant Staphylococcus aureus scn protein
Storage	The shelf life is related to many factors, storage state, buffer ingredients, storage temperature and the stability of the protein itself. Generally, the shelf life of liquid form is 6 months at -20°C/-80°C. The shelf life of lyophilized form is 12 months at -20°C/-80°C.
Uniprot No.	Q99SU9
Product Type	Recombinant Protein
Immunogen Species	Staphylococcus aureus (strain N315)
Purity	≥ 85% as determined by SDS-PAGE.
Sequence	STSLPTSNEYQNEKLANELKSLLELNVNELATGSLNTYYKRTIKISGLKAMYAL KSKDFKMMSEAKYQLQKIYNEIDEALSKY
Research Area	others
Source	Yeast
Target Names	scn
Protein Names	Recommended name: Staphylococcal complement inhibitor Short name= SCIN
Expression Region	32-116aa
Notes	Repeated freezing and thawing is not recommended. Store working aliquots at 4°C for up to one week.
Tag Info	N-terminal 10xHis-tagged
Mol. Weight	12.3 kDa
Protein Length	Full Length of Mature Protein
Image	



(Tris-Glycine gel) Discontinuous SDS-PAGE (reduced) with 5% enrichment gel and 15% separation gel.



Based on the SEQUEST from database of Yeast host and target protein, the LC-MS/MS Analysis result of CSB-YP858805SKY could indicate that this peptide derived from Yeast-expressed *Staphylococcus aureus* (strain N315) scn.



Based on the SEQUEST from database of Yeast host and target protein, the LC-MS/MS Analysis result of CSB-YP858805SKY could indicate that this peptide derived from Yeast-expressed *Staphylococcus aureus* (strain N315) scn.

Reconstitution

We recommend that this vial be briefly centrifuged prior to opening to bring the contents to the bottom. Please reconstitute protein in deionized sterile water to a concentration of 0.1-1.0 mg/mL. We recommend to add 5-50% of glycerol (final concentration) and aliquot for long-term storage at -20°C/-80°C. Our default final concentration of glycerol is 50%. Customers could use it as reference.

Shelf Life

The shelf life is related to many factors, storage state, buffer ingredients, storage temperature and the stability of the protein itself. Generally, the shelf life of liquid form is 6 months at -20°C/-80°C. The shelf life of lyophilized form is 12 months at -20°C/-80°C.