



Recombinant Human Interleukin-12 receptor subunit beta-2 (IL12RB2), partial

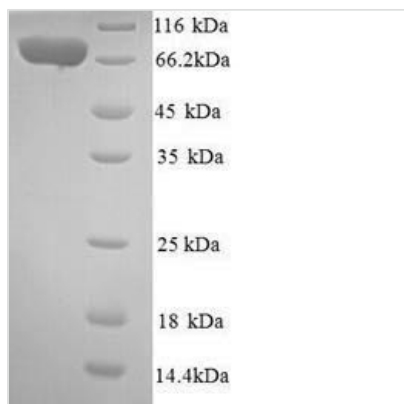
Product Code	CSB-YP859518HU
Relevance	Receptor for interleukin-12. This subunit is the signaling component coupling to the JAK2/STAT4 pathway. Promotes the proliferation of T-cells as well as NK cells. Induces the promotion of T-cells towards the Th1 phenotype by strongly enhancing IFN-gamma production.
Abbreviation	Recombinant Human IL12RB2 protein, partial
Storage	The shelf life is related to many factors, storage state, buffer ingredients, storage temperature and the stability of the protein itself. Generally, the shelf life of liquid form is 6 months at -20°C/-80°C. The shelf life of lyophilized form is 12 months at -20°C/-80°C.
Uniprot No.	Q99665
Product Type	Recombinant Protein
Immunogen Species	Homo sapiens (Human)
Purity	Greater than 90% as determined by SDS-PAGE.
Sequence	KIDACKRGDVTVKPSHVILLGSTVNITCSLKPRQGCFFHYSRRNKLILYKFDRRIN FHHGHSLSNSQVTGLPLGTTLFVCKLACINSDEIQICGAEIFVGVAPQEQPNLSCI QKGEQGTVACTWERGRDTHLYTEYTLQLSGPKNLTWQKQCKDIYCDYLDFIGI NLTPESPESNFTAKVTAVNSLGSSSSLPSTFTFLDIVRPLPPWDIRIKFQKASVS RCTLYWRDEGLVLLNRLRYRPSNSRLWNMNVNVTAKGRHDLDDLKPFTEYEF QISSKLHLYKGSWSDWSESLRAQTPEEEPTGMLDVWYMKRHIDYSRQQISLF WKNLSVSEARGKILHYQVTLQELTGKAMTQNITGHTSWTTVIPRTGNWAVAV SAANSKGSSLPTRINIMNLCEAGLLAPRQVSANSEGMNLTWQPPRKDPSA VQEYVVEWRELHPGGDTQVPLNWLRSPYNVSALISENIKSYICYEIRVYALSG DQGGCSSILGNSKHKAPLSGPHINAITEEKGSILISWNSIPVQE QMGCLLHYRIY WKERDSNSQPQLCEIPYRVSQNSHPINSLQPRVTYVLWMTALTAAGESSHGN EREFCLQGKAN
Research Area	Cancer
Source	Yeast
Target Names	IL12RB2
Protein Names	Recommended name: Interleukin-12 receptor subunit beta-2 Short name= IL-12 receptor subunit beta-2 Short name= IL-12R subunit beta-2 Short name= IL-12R-beta-2 Short name= IL-12RB2
Expression Region	24-622aa
Notes	Repeated freezing and thawing is not recommended. Store working aliquots at 4°C for up to one week.
Tag Info	N-terminal 6xHis-tagged



Mol. Weight 69.7kDa

Protein Length Extracellular Domain

Image



(Tris-Glycine gel) Discontinuous SDS-PAGE (reduced) with 5% enrichment gel and 15% separation gel.

Reconstitution

We recommend that this vial be briefly centrifuged prior to opening to bring the contents to the bottom. Please reconstitute protein in deionized sterile water to a concentration of 0.1-1.0 mg/mL. We recommend to add 5-50% of glycerol (final concentration) and aliquot for long-term storage at -20°C/-80°C. Our default final concentration of glycerol is 50%. Customers could use it as reference.

Shelf Life

The shelf life is related to many factors, storage state, buffer ingredients, storage temperature and the stability of the protein itself. Generally, the shelf life of liquid form is 6 months at -20°C/-80°C. The shelf life of lyophilized form is 12 months at -20°C/-80°C.