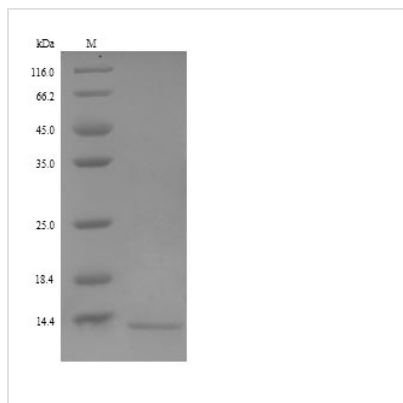




Recombinant Human Resistin-like beta (RETNLB)

Product Code	CSB-YP860653HU
Relevance	Probable hormone.
Abbreviation	Recombinant Human RETNLB protein
Storage	The shelf life is related to many factors, storage state, buffer ingredients, storage temperature and the stability of the protein itself. Generally, the shelf life of liquid form is 6 months at -20°C/-80°C. The shelf life of lyophilized form is 12 months at -20°C/-80°C.
Uniprot No.	Q9BQ08
Alias	Colon and small intestine-specific cysteine-rich protein Colon carcinoma-related gene protein Cysteine-rich secreted protein A12-alpha-like 1 Cysteine-rich secreted protein FIZZ2 RELMbeta
Product Type	Recombinant Protein
Immunogen Species	Homo sapiens (Human)
Purity	≥ 90% as determined by SDS-PAGE.
Sequence	QCSLDSVMDKKIKDVLNSLEYSPSPISKLLSCASVKSQGRPSSCPAGMAVTGC ACGYGCGSWDVQLETTCHCQCSVVDWTTARCCHLT
Research Area	Signal Transduction
Source	Yeast
Target Names	RETNLB
Protein Names	Recommended name: Resistin-like beta Alternative name(s): Colon and small intestine-specific cysteine-rich protein Colon carcinoma-related gene protein Cysteine-rich secreted protein A12-alpha-like 1 Cysteine-rich secreted protein FIZZ
Expression Region	24-111aa
Notes	Repeated freezing and thawing is not recommended. Store working aliquots at 4°C for up to one week.
Tag Info	N-terminal 6xHis-tagged
Mol. Weight	11.4kDa
Protein Length	Full Length of Mature Protein
Image	



(Tris-Glycine gel) Discontinuous SDS-PAGE (reduced) with 5% enrichment gel and 15% separation gel.

Reconstitution

We recommend that this vial be briefly centrifuged prior to opening to bring the contents to the bottom. Please reconstitute protein in deionized sterile water to a concentration of 0.1-1.0 mg/mL. We recommend to add 5-50% of glycerol (final concentration) and aliquot for long-term storage at -20°C/-80°C. Our default final concentration of glycerol is 50%. Customers could use it as reference.

Shelf Life

The shelf life is related to many factors, storage state, buffer ingredients, storage temperature and the stability of the protein itself. Generally, the shelf life of liquid form is 6 months at -20°C/-80°C. The shelf life of lyophilized form is 12 months at -20°C/-80°C.