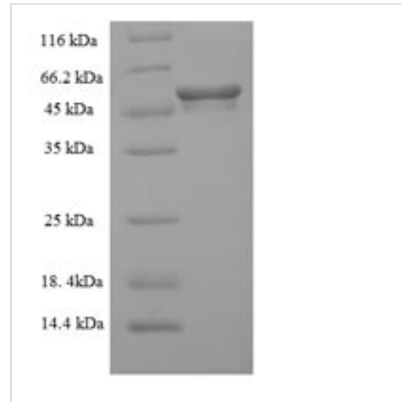




Recombinant Mouse Mixed lineage kinase domain-like protein (Mlkl)

Product Code	CSB-YP861529MO
Relevance	Pseudokinase that plays a key role in TNF-induced necroptosis, a programmed cell death process. Activated following phosphorylation by RIPK3, leading to homotrimerization, localization to the plasma mbrane and execution of programmed necrosis characterized by calcium influx and plasma mbrane damage. Does not have protein kinase activity.
Abbreviation	Recombinant Mouse Mlkl protein
Storage	The shelf life is related to many factors, storage state, buffer ingredients, storage temperature and the stability of the protein itself. Generally, the shelf life of liquid form is 6 months at -20°C/-80°C. The shelf life of lyophilized form is 12 months at -20°C/-80°C.
Uniprot No.	Q9D2Y4
Product Type	Recombinant Protein
Immunogen Species	Mus musculus (Mouse)
Purity	Greater than 90% as determined by SDS-PAGE.
Sequence	MDKLGQIIKLGQLIYEQCEKMKYCRKQCQRLGNRVHGLLQPLQRLQAQGKKN LPDDITAALGRFDEVLKEANQQIEKFSKKSHIWKVFSVGNKILFHEVNEKLRD VWEELLLLQVYHWNTVSDVSQPASWQQEDRQDAEEDGNENMKVILMQLQI SVEEINKTLKQCSLKPTQEIPQDLQIKEIPKEHLGPPWTKLKTSKMSTIYRGEYH RSPVTIKVFNNPQAESVGIVRFTFNDEIKTMKKFDSNPILRIFGICIDQTVKPPF SIVMEYCELGTLRELLDREKDLTMSVRSLVLRAARGLYRLHHSETLHRNISS SFLVAGGYQVKLAGFELSKTQNSISRTAKSTKAERSSSTIYVSPERLKNPFCLY DIKAEIYSFGIVLWEIATGKIPFEGCDSKKIRELVAEDKKQEPVGGDCPELLREII NECRAHEPSQRPSVDGRSLSGRERILERLSAVEESTDKKV
Research Area	Others
Source	Yeast
Target Names	Mlkl
Protein Names	Recommended name: Mixed lineage kinase domain-like protein
Expression Region	1-472aa
Notes	Repeated freezing and thawing is not recommended. Store working aliquots at 4°C for up to one week.
Tag Info	N-terminal 6xHis-tagged
Mol. Weight	56.3kDa
Protein Length	Full Length
Image	



(Tris-Glycine gel) Discontinuous SDS-PAGE (reduced) with 5% enrichment gel and 15% separation gel.

Reconstitution

We recommend that this vial be briefly centrifuged prior to opening to bring the contents to the bottom. Please reconstitute protein in deionized sterile water to a concentration of 0.1-1.0 mg/mL. We recommend to add 5-50% of glycerol (final concentration) and aliquot for long-term storage at -20°C/-80°C. Our default final concentration of glycerol is 50%. Customers could use it as reference.

Shelf Life

The shelf life is related to many factors, storage state, buffer ingredients, storage temperature and the stability of the protein itself. Generally, the shelf life of liquid form is 6 months at -20°C/-80°C. The shelf life of lyophilized form is 12 months at -20°C/-80°C.