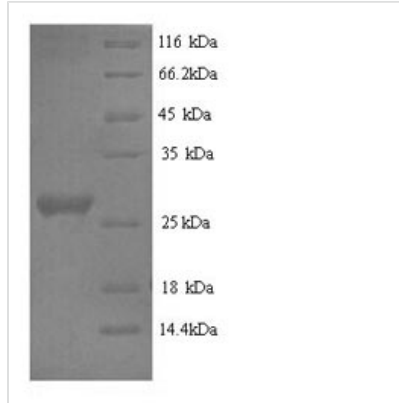




# Recombinant Rabbit Interleukin-6 (IL6)

<b>Product Code</b>	CSB-YP863071RB
<b>Relevance</b>	Cytokine with a wide variety of biological functions. It is a potent inducer of the acute phase response. Plays an essential role in the final differentiation of B-cells into Ig-secreting cells Involved in lymphocyte and monocyte differentiation. Acts on B-cells, T-cells, hepatocytes, hatopoietic progenitor cells and cells of the CNS. Required for the generation of T(H)17 cells. Also acts as a myokine. It is discharged into the bloodstream after muscle contraction and acts to increase the breakdown of fats and to improve insulin resistance. It induces myeloma and plasmacytoma growth and induces nerve cells differentiation .
<b>Abbreviation</b>	Recombinant Rabbit IL6 protein
<b>Storage</b>	The shelf life is related to many factors, storage state, buffer ingredients, storage temperature and the stability of the protein itself. Generally, the shelf life of liquid form is 6 months at -20°C/-80°C. The shelf life of lyophilized form is 12 months at -20°C/-80°C.
<b>Uniprot No.</b>	Q9MZR1
<b>Product Type</b>	Recombinant Protein
<b>Immunogen Species</b>	Oryctolagus cuniculus (Rabbit)
<b>Purity</b>	≥ 90% as determined by SDS-PAGE.
<b>Sequence</b>	FPTSAPVREDSNTKASPDKLTTPPGRTIESIRSILETIKELRKEMCDHDVNCMN RKEALAEVNLHLPLRIEEDGCFPPAVNNETCLLRITSGLMEFMYLEHLQAKFR SDEENTRVSMVLKNIQHLLIKTLRPKVKNLNEEATLKPAAVAVSLMENLQQKNQW LKTTTIHFILRGLTNFLEFTLRAVDLMECGCPLRNFMGSASHGQNTPSCPLDT
<b>Research Area</b>	Others
<b>Source</b>	Yeast
<b>Target Names</b>	IL6
<b>Protein Names</b>	Recommended name: Interleukin-6 Short name= IL-6
<b>Expression Region</b>	27-241aa
<b>Notes</b>	Repeated freezing and thawing is not recommended. Store working aliquots at 4°C for up to one week.
<b>Tag Info</b>	N-terminal 6xHis-tagged
<b>Mol. Weight</b>	26.4kDa
<b>Protein Length</b>	Full Length of Mature Protein
<b>Image</b>	



(Tris-Glycine gel) Discontinuous SDS-PAGE (reduced) with 5% enrichment gel and 15% separation gel.

### Reconstitution

We recommend that this vial be briefly centrifuged prior to opening to bring the contents to the bottom. Please reconstitute protein in deionized sterile water to a concentration of 0.1-1.0 mg/mL. We recommend to add 5-50% of glycerol (final concentration) and aliquot for long-term storage at -20°C/-80°C. Our default final concentration of glycerol is 50%. Customers could use it as reference.

### Shelf Life

The shelf life is related to many factors, storage state, buffer ingredients, storage temperature and the stability of the protein itself. Generally, the shelf life of liquid form is 6 months at -20°C/-80°C. The shelf life of lyophilized form is 12 months at -20°C/-80°C.