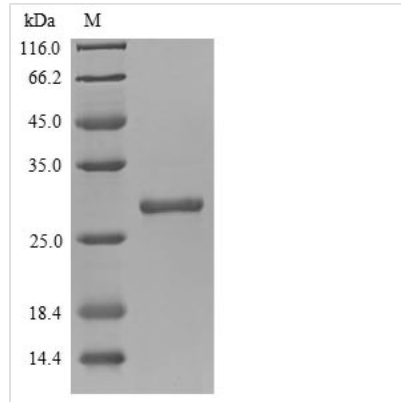


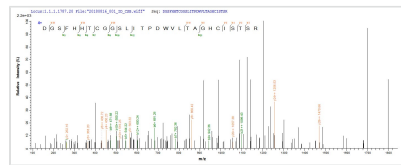


Recombinant Mouse Chymotrypsin-like elastase family member 3B (Cela3b)

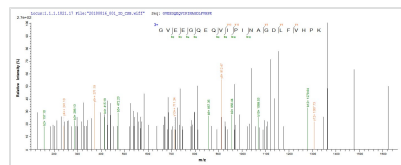
Product Code	CSB-YP875103MO
Relevance	Efficient protease with alanine specificity but only little elastolytic activity.
Abbreviation	Recombinant Mouse Cela3b protein
Storage	The shelf life is related to many factors, storage state, buffer ingredients, storage temperature and the stability of the protein itself. Generally, the shelf life of liquid form is 6 months at -20°C/-80°C. The shelf life of lyophilized form is 12 months at -20°C/-80°C.
Uniprot No.	Q9CQ52
Product Type	Recombinant Protein
Immunogen Species	Mus musculus (Mouse)
Purity	≥ 85% as determined by SDS-PAGE.
Sequence	VVNGEEAVPHSWPWQVSLQYEKDGFSFHHTCGGSLITPDWVLTAGHCISTSR YQVVLGEHERGVEEGQEQQVIPINAGDLFVHPKWNSMVCVSCGNDIALVKLSRS AQLGDAVQLACLPPAGEILPNGAPCYISGWGRLSTNGPLPDKLQQALLPVVDY EHCSRWNWWGLSVKTTMVCAGGDIQSGCNGDSSGGPLNCPADNGTWQVHG VTSFVSSLGCNTRLRKPTVFTRVSAFIDWIEETIANN
Research Area	Cell Biology
Source	Yeast
Target Names	Cela3b
Protein Names	Elastase IIIB Elastase-3B Protease E Ela3, Ela3b
Expression Region	28-269aa
Notes	Repeated freezing and thawing is not recommended. Store working aliquots at 4°C for up to one week.
Tag Info	N-terminal 6xHis-tagged and C-terminal Myc-tagged
Mol. Weight	29.6 kDa
Protein Length	Full Length of Mature Protein
Image	



(Tris-Glycine gel) Discontinuous SDS-PAGE (reduced) with 5% enrichment gel and 15% separation gel.



Based on the SEQUEST from database of Yeast host and target protein, the LC-MS/MS Analysis result of CSB-YP875103MO could indicate that this peptide derived from Yeast-expressed Mus musculus (Mouse) Cela3b.



Based on the SEQUEST from database of Yeast host and target protein, the LC-MS/MS Analysis result of CSB-YP875103MO could indicate that this peptide derived from Yeast-expressed Mus musculus (Mouse) Cela3b.

Reconstitution

We recommend that this vial be briefly centrifuged prior to opening to bring the contents to the bottom. Please reconstitute protein in deionized sterile water to a concentration of 0.1-1.0 mg/mL. We recommend to add 5-50% of glycerol (final concentration) and aliquot for long-term storage at -20°C/-80°C. Our default final concentration of glycerol is 50%. Customers could use it as reference.

Shelf Life

The shelf life is related to many factors, storage state, buffer ingredients, storage temperature and the stability of the protein itself. Generally, the shelf life of liquid form is 6 months at -20°C/-80°C. The shelf life of lyophilized form is 12 months at -20°C/-80°C.