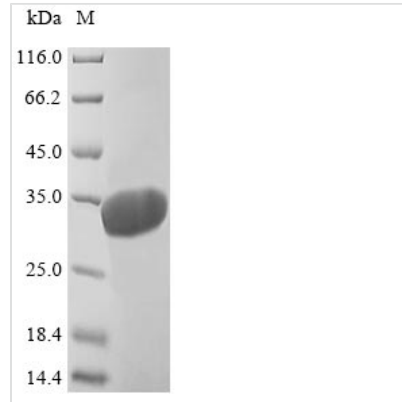




# Recombinant Mouse 14-3-3 protein beta/alpha (Ywhab)

<b>Product Code</b>	CSB-YP875120MO
<b>Relevance</b>	Adapter protein implicated in the regulation of a large spectrum of both general and specialized signaling pathways. Binds to a large number of partners, usually by recognition of a phosphoserine or phosphothreonine motif. Binding generally results in the modulation of the activity of the binding partner. Negative regulator of osteogenesis. Blocks the nuclear translocation of the phosphorylated form (by AKT1) of SRPK2 and antagonizes its stimulatory effect on cyclin D1 expression resulting in blockage of neuronal apoptosis elicited by SRPK2. Negative regulator of signaling cascades that mediate activation of MAP kinases via AKAP13.
<b>Abbreviation</b>	Recombinant Mouse Ywhab protein
<b>Storage</b>	The shelf life is related to many factors, storage state, buffer ingredients, storage temperature and the stability of the protein itself. Generally, the shelf life of liquid form is 6 months at -20°C/-80°C. The shelf life of lyophilized form is 12 months at -20°C/-80°C.
<b>Uniprot No.</b>	Q9CQV8
<b>Product Type</b>	Recombinant Protein
<b>Immunogen Species</b>	Mus musculus (Mouse)
<b>Purity</b>	≥ 90% as determined by SDS-PAGE.
<b>Sequence</b>	MTMDKSELVQKAKLAEQAERYDDMAAAMKAVTEQGHELNSNEERNLLSVAYK NVVGARRSSWRVISSIEQKTERNEKKQQMGKEYREKIEAELQDICNDVLELLD KYLILNATQAESKVFLKMKGDYFRYLSEVASGENKQTTVSNSQQAYQEAFEI SKKEMQPTHPIRLGLALNFSVFYIEILNSPEKACSLAKTAFDEAIAELDTLNEES YKDSTLIMQLLRDNLTLWTSENQGDEGDAGEGEN
<b>Research Area</b>	Neuroscience
<b>Source</b>	Yeast
<b>Target Names</b>	Ywhab
<b>Protein Names</b>	Protein kinase C inhibitor protein 1
<b>Expression Region</b>	1-246aa
<b>Notes</b>	Repeated freezing and thawing is not recommended. Store working aliquots at 4°C for up to one week.
<b>Tag Info</b>	N-terminal 6xHis-tagged
<b>Mol. Weight</b>	30.1 kDa
<b>Protein Length</b>	Full Length
<b>Image</b>	



(Tris-Glycine gel) Discontinuous SDS-PAGE (reduced) with 5% enrichment gel and 15% separation gel.

### Reconstitution

We recommend that this vial be briefly centrifuged prior to opening to bring the contents to the bottom. Please reconstitute protein in deionized sterile water to a concentration of 0.1-1.0 mg/mL. We recommend to add 5-50% of glycerol (final concentration) and aliquot for long-term storage at -20°C/-80°C. Our default final concentration of glycerol is 50%. Customers could use it as reference.

### Shelf Life

The shelf life is related to many factors, storage state, buffer ingredients, storage temperature and the stability of the protein itself. Generally, the shelf life of liquid form is 6 months at -20°C/-80°C. The shelf life of lyophilized form is 12 months at -20°C/-80°C.