



Recombinant Human Melanocyte protein PMEL (PMEL), partial

Product Code	CSB-YP021324HU
Relevance	Plays a central role in the biogenesis of melanosomes. Involved in the maturation of melanosomes from stage I to II. The transition from stage I melanosomes to stage II melanosomes involves an elongation of the vesicle, and the appearance within of distinct fibrillar structures. Release of the soluble form, ME20-S, could protect tumor cells from antibody mediated immunity.
Abbreviation	Recombinant Human PMEL protein, partial
Storage	The shelf life is related to many factors, storage state, buffer ingredients, storage temperature and the stability of the protein itself. Generally, the shelf life of liquid form is 6 months at -20°C/-80°C. The shelf life of lyophilized form is 12 months at -20°C/-80°C.
Uniprot No.	P40967
Alias	ME20-M ;ME20MMelanocyte protein Pmel 17Melanocytes lineage-specific antigen GP100Melanoma-associated ME20 antigen;P1;P100Premelanosome protein;Silver locus protein homolog
Product Type	Recombinant Protein
Immunogen Species	Homo sapiens (Human)
Purity	Greater than 90% as determined by SDS-PAGE.
Sequence	KVPRNQDWLGVSRQLRTKAWNRQLYPEWTEAQLDCWRGGQVSLKVSNDG PTLIGANASFSIALNFPGSQKVLDPDGQVIWVNNTIINGSQVWGGQPVPQETD DACIFPDGGPCPSGSWSQKRSFVYVWKTWGQYWQVLGGPVSGLSIGTGRA MLGHTMEVTVYHRRGSRSYVPLAHSSSAFTITDQVPFVSVSQRLRALDGGN KHFLRNQPLTFALQLHDPSTGYLAEADLSYTWDFGDSSGTLISRALVVHTHTYLEP GPVTAQVVLQAAIPLTSCGSSPVPGTDDGHRPTAEAPNTTAGQVPTTEVVGT PGQAPTAEPSGTTSVQVPTTEVISTAPVQMPTAESTGMTPEKVPVSEVMGTTL AEMSTPEATGMTPAEVSIVVLSGTTAAQVTTTEWVETTARELPIPEPEGPDAS SIMSTESITGSLGPLLDGTATLRLV
Research Area	Metabolism
Source	Yeast
Target Names	PMEL
Protein Names	Recommended name: Melanocyte protein PMEL Alternative name(s): ME20-M Short name= ME20M Melanocyte protein Pmel 17 Melanocytes lineage-specific antigen GP100 Melanoma-associated ME20 antigen P1 P100 Premelanosome protein Si
Expression Region	25-467aa
Notes	Repeated freezing and thawing is not recommended. Store working aliquots at 4°C for up to one week.

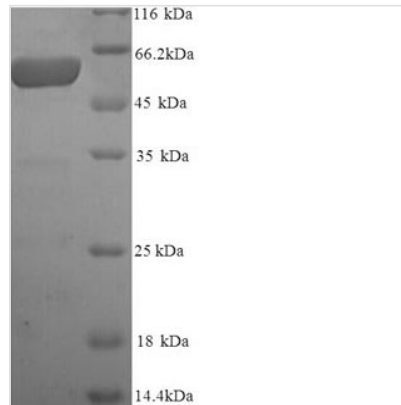


Tag Info N-terminal 6xHis-tagged

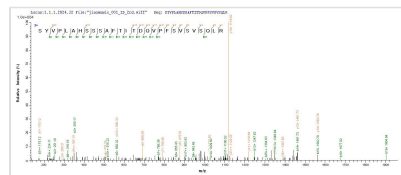
Mol. Weight 49.0kDa

Protein Length Partial

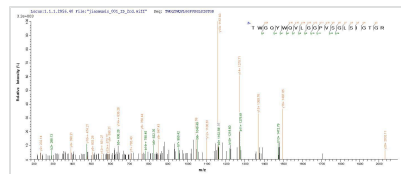
Image



(Tris-Glycine gel) Discontinuous SDS-PAGE (reduced) with 5% enrichment gel and 15% separation gel.



Based on the SEQUEST from database of Yeast host and target protein, the LC-MS/MS Analysis result of CSB-YP021324HU could indicate that this peptide derived from Yeast-expressed Homo sapiens (Human) PMEL.



Based on the SEQUEST from database of Yeast host and target protein, the LC-MS/MS Analysis result of CSB-YP021324HU could indicate that this peptide derived from Yeast-expressed Homo sapiens (Human) PMEL.

Reconstitution

We recommend that this vial be briefly centrifuged prior to opening to bring the contents to the bottom. Please reconstitute protein in deionized sterile water to a concentration of 0.1-1.0 mg/mL. We recommend to add 5-50% of glycerol (final concentration) and aliquot for long-term storage at -20°C/-80°C. Our default final concentration of glycerol is 50%. Customers could use it as reference.

Shelf Life

The shelf life is related to many factors, storage state, buffer ingredients, storage temperature and the stability of the protein itself. Generally, the shelf life of liquid form is 6 months at -20°C/-80°C. The shelf life of lyophilized form is 12 months at -20°C/-80°C.