

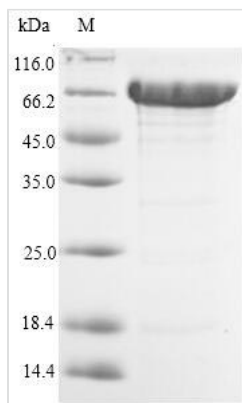


# Recombinant Human Acetyl-coenzyme A synthetase 2-like, mitochondrial (ACSS1)

<b>Product Code</b>	CSB-YP882105HU
<b>Relevance</b>	Important for maintaining normal body temperature during fasting and for energy homeostasis. Essential for energy expenditure under ketogenic conditions. Converts acetate to acetyl-CoA so that it can be used for oxidation through the tricarboxylic cycle to produce ATP and CO <sub>2</sub> .
<b>Abbreviation</b>	Recombinant Human ACSS1 protein
<b>Storage</b>	The shelf life is related to many factors, storage state, buffer ingredients, storage temperature and the stability of the protein itself. Generally, the shelf life of liquid form is 6 months at -20°C/-80°C. The shelf life of lyophilized form is 12 months at -20°C/-80°C.
<b>Uniprot No.</b>	Q9NUB1
<b>Alias</b>	Acetate--CoA ligase 2 Acetyl-CoA synthetase 2
<b>Product Type</b>	Recombinant Protein
<b>Immunogen Species</b>	Homo sapiens (Human)
<b>Purity</b>	≥ 90% as determined by SDS-PAGE.
<b>Sequence</b>	ASGPSGSAPAVAAAAAQPGSYPALSAQAAREPAAFWGPLARDTLVWDTPYH TVWDCDFSTGKIGWFLGGQLNVSVNCLDQHVRKSPESVALIWERDEPGTEVR ITYRELLETTCRLANTLKRHGVHRGDRVAIYMPVSPLAVAAMLACARIGAVHTVI FAGFSAESLAGRINDAKCKVVITFNQQLRGGRVVELKKIVDEAVKHCPTVQHVL VAHRTDNKVHMGDLDVPLEQEMAKEDPVCAPESMGSEDMLFMLYTSGSTGM PKGIVHTQAGYLLYAALTHKLVFDHQPGDIFGCVADIGWITGHSYVVYGPLCNG ATSVLFESTPVYPNAGRYWETVERLKINQFYGAPTAVRLLLKYGDAAWVKKYDR SSLRTLGSVGEPINCEAWEWLHRVVGDSRCTLVDTWWQTETGGICIAPRPSE EGAEILPAMAMRPFFGIVPVLMDKGSVVEGSNVSGALCISQAWPGMARTIYG DHQRFVDAYFKAYPGYYFTGDGAYRTEGGYYQITGRMDDVINISGHRLGTAEI EDAIADHPAVPESAVIGYPHDIKGEAAFAFIVVKDSAGDSDDVVVQELKSMVATKI AKYAVPDEILVVKRLPKTRSGKVMRLLRKIITSEAQELGDTTTLLEDPSIIAEILSV YQKCKDKQAAAK
<b>Research Area</b>	others
<b>Source</b>	Yeast
<b>Target Names</b>	ACSS1
<b>Protein Names</b>	Recommended name: Acetyl-coenzyme A synthetase 2-like, mitochondrial EC= 6.2.1.1 Alternative name(s): Acetate--CoA ligase 2 Acetyl-CoA synthetase 2 Short name= AceCS2 Acyl-CoA synthetase short-chain family member 1
<b>Expression Region</b>	38-689aa
<b>Notes</b>	Repeated freezing and thawing is not recommended. Store working aliquots at 4°C for up to one week.



<b>Tag Info</b>	N-terminal 10xHis-tagged
<b>Mol. Weight</b>	73.6kDa
<b>Protein Length</b>	Full Length of Mature Protein

**Image**

(Tris-Glycine gel) Discontinuous SDS-PAGE (reduced) with 5% enrichment gel and 15% separation gel.

**Reconstitution**

We recommend that this vial be briefly centrifuged prior to opening to bring the contents to the bottom. Please reconstitute protein in deionized sterile water to a concentration of 0.1-1.0 mg/mL. We recommend to add 5-50% of glycerol (final concentration) and aliquot for long-term storage at -20°C/-80°C. Our default final concentration of glycerol is 50%. Customers could use it as reference.

**Shelf Life**

The shelf life is related to many factors, storage state, buffer ingredients, storage temperature and the stability of the protein itself. Generally, the shelf life of liquid form is 6 months at -20°C/-80°C. The shelf life of lyophilized form is 12 months at -20°C/-80°C.