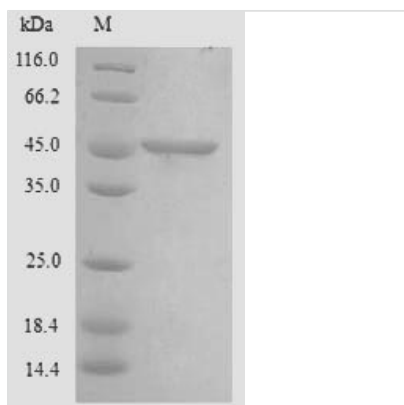




Recombinant Human Chitinase domain-containing protein 1 (CHID1)

Product Code	CSB-YP883614HU
Relevance	Saccharide- and LPS-binding protein with possible roles in pathogen sensing and endotoxin neutralization. Ligand-binding specificity relates to the length of the oligosaccharides, with preference for chitotetraose (in vitro).
Abbreviation	Recombinant Human CHID1 protein
Storage	The shelf life is related to many factors, storage state, buffer ingredients, storage temperature and the stability of the protein itself. Generally, the shelf life of liquid form is 6 months at -20°C/-80°C. The shelf life of lyophilized form is 12 months at -20°C/-80°C.
Uniprot No.	Q9BWS9
Alias	Stabilin-1-interacting chitinase-like protein Short name: SI-CLP
Product Type	Recombinant Protein
Immunogen Species	Homo sapiens (Human)
Purity	≥ 90% as determined by SDS-PAGE.
Sequence	<p> TLSKSDAKKAASKTLLEKSQFSDKPVQDRGLVVTDLKAESVVLEHRSYCSAKA RDRHFAGDVLGYVTPWNSHGVDVTKVFGSKFTQISPVWLQLKRRGREMFEV TGLHDVDQGWMRRAVRKHAKGLHIVPRLLFEDWTYDDFRNVLDSEDEIEELSK TVVQVAKNQHFDFGVVEVWNQLLSQKRVGLIHMLTHLAEALHQARLLALLVIP PAITPGTDQLGMFTHKEFEQLAPVLDGFSLMTYDYSTAHPGNAPLSWVRA CVQVLDPKSKWRSKILLGLNFYGM DYATSKDAREPVVGARYIQLTKDHRPRM VWDSQASEHFFEYKKSRSRGRHVVFYPTLKS LQVRLELARELGVGVS IWELGQ GLDYFYDLL </p>
Research Area	Tags & Cell Markers
Source	Yeast
Target Names	CHID1
Protein Names	Recommended name: Chitinase domain-containing protein 1 Alternative name(s): Stabilin-1-interacting chitinase-like protein Short name= SI-CLP
Expression Region	20-393aa
Notes	Repeated freezing and thawing is not recommended. Store working aliquots at 4°C for up to one week.
Tag Info	N-terminal 6xHis-tagged
Mol. Weight	44.8kDa
Protein Length	Full Length of Mature Protein
Image	



(Tris-Glycine gel) Discontinuous SDS-PAGE (reduced) with 5% enrichment gel and 15% separation gel.

Reconstitution

We recommend that this vial be briefly centrifuged prior to opening to bring the contents to the bottom. Please reconstitute protein in deionized sterile water to a concentration of 0.1-1.0 mg/mL. We recommend to add 5-50% of glycerol (final concentration) and aliquot for long-term storage at -20°C/-80°C. Our default final concentration of glycerol is 50%. Customers could use it as reference.

Shelf Life

The shelf life is related to many factors, storage state, buffer ingredients, storage temperature and the stability of the protein itself. Generally, the shelf life of liquid form is 6 months at -20°C/-80°C. The shelf life of lyophilized form is 12 months at -20°C/-80°C.