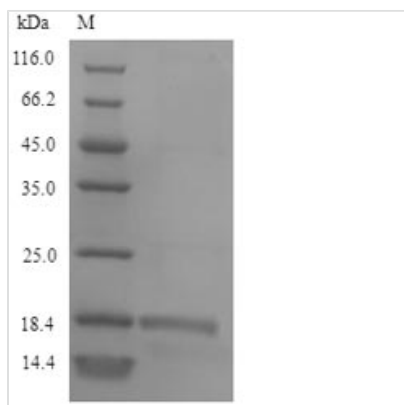




# Recombinant Calloselasma rhodostoma Snaclec rhodocytin subunit alpha

<b>Product Code</b>	CSB-YP888242CBG
<b>Relevance</b>	Elicits platelet aggregation by the binding to the C-type lectin domain family 1 member B (CLEC1B/CLEC2). Binding leads to tyrosine phosphorylation in the Cytoplasmic domain tail of CLEC1B, which promotes the binding of spleen tyrosine kinase (Syk), subsequent activation of PLC-gamma-2, and platelet activation and aggregation. Binding to GPIbalpha (GP1BA) and alpha-2/beta-1 (ITGA2/ITGB1) may also induce aggregation, but this is controversial.
<b>Abbreviation</b>	Recombinant Calloselasma rhodostoma Snaclec rhodocytin subunit alpha protein
<b>Storage</b>	The shelf life is related to many factors, storage state, buffer ingredients, storage temperature and the stability of the protein itself. Generally, the shelf life of liquid form is 6 months at -20°C/-80°C. The shelf life of lyophilized form is 12 months at -20°C/-80°C.
<b>Uniprot No.</b>	Q9I841
<b>Alias</b>	Aggretin alpha chain Rhodoaggretin subunit alpha
<b>Product Type</b>	Recombinant Protein
<b>Immunogen Species</b>	Calloselasma rhodostoma (Malayan pit viper) (Agkistrodon rhodostoma)
<b>Purity</b>	≥ 90% as determined by SDS-PAGE.
<b>Sequence</b>	GLEDCDFGWSPYDQHCYQAFNEQKTWDEAEKFCRAQENGAHLASIESNGEADFVSWLISQKDELADEDYVWIGLRAQNKEQQCSSEWSDGSSVSYENLIDLHTKKCGALEKLTGFRKWVNYCEQMhafvckllpy
<b>Research Area</b>	Others
<b>Source</b>	Yeast
<b>Protein Names</b>	Recommended name: Rhodocytin subunit alpha Alternative name(s): Aggretin alpha chain
<b>Expression Region</b>	1-136aa
<b>Notes</b>	Repeated freezing and thawing is not recommended. Store working aliquots at 4°C for up to one week.
<b>Tag Info</b>	N-terminal 6xHis-tagged
<b>Mol. Weight</b>	17.8kDa
<b>Protein Length</b>	Full Length
<b>Image</b>	



(Tris-Glycine gel) Discontinuous SDS-PAGE (reduced) with 5% enrichment gel and 15% separation gel.

### Reconstitution

We recommend that this vial be briefly centrifuged prior to opening to bring the contents to the bottom. Please reconstitute protein in deionized sterile water to a concentration of 0.1-1.0 mg/mL. We recommend to add 5-50% of glycerol (final concentration) and aliquot for long-term storage at -20°C/-80°C. Our default final concentration of glycerol is 50%. Customers could use it as reference.

### Shelf Life

The shelf life is related to many factors, storage state, buffer ingredients, storage temperature and the stability of the protein itself. Generally, the shelf life of liquid form is 6 months at -20°C/-80°C. The shelf life of lyophilized form is 12 months at -20°C/-80°C.