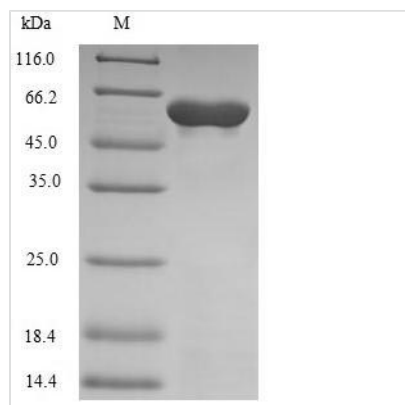




# Recombinant Human DNA-directed DNA/RNA polymerase mu (POLM)

<b>Product Code</b>	CSB-YP889065HU
<b>Relevance</b>	Gap-filling polymerase involved in repair of DNA double-strand breaks by non-homologous end joining (NHEJ). Participates in immunoglobulin (Ig) light chain gene rearrangement in V(D)J recombination.
<b>Abbreviation</b>	Recombinant Human POLM protein
<b>Storage</b>	The shelf life is related to many factors, storage state, buffer ingredients, storage temperature and the stability of the protein itself. Generally, the shelf life of liquid form is 6 months at -20°C/-80°C. The shelf life of lyophilized form is 12 months at -20°C/-80°C.
<b>Uniprot No.</b>	Q9NP87
<b>Product Type</b>	Recombinant Protein
<b>Immunogen Species</b>	Homo sapiens (Human)
<b>Purity</b>	≥ 85% as determined by SDS-PAGE.
<b>Sequence</b>	MLPKRRRRARVGSPSGDAASSTPPSTRFPGVAIYLVEPRMGRSRRRAFLTGLAR SKGFRVLDACSSEATHVMEETSAAEEAVSWQERRMAAAPPGCTPPALLDISW LTESLGAGQPVPVECRHRLEVAGPRKGPLSPAWMPAYACQRPTPLTHHNTGL SEALEILAEAAGFEGSEGRLLTFCRAASVLKALPSPVTTLSQLQGLPHFGEHSS RVVQELLEHGVC EEVERVRRSERYQTMKLFTQIFGVGVTADRWYREGLRTL DDLREQPQKLTQQQKAGLQHHQDLSTPVLRSVDALQQVVEEAVGQALPGA TVTLTGGFRRGKLQGHDVDFLITHPKEGQEAGLLPRVMCRLQDQGLILYHQH QHSCCESPTRLAQQSHMDAFERSFCIFRLPQPPGAAVGGSTRPCPSWKAVR VDLVVAPVSQFPFALLGWTGSKLFRQLRRFSRKEKGLWLNSHGLFDPEQKT FFQAASEEDIFRHLGLELPPPEQRNA
<b>Research Area</b>	others
<b>Source</b>	Yeast
<b>Target Names</b>	POLM
<b>Protein Names</b>	Terminal transferase
<b>Expression Region</b>	1-494aa
<b>Notes</b>	Repeated freezing and thawing is not recommended. Store working aliquots at 4°C for up to one week.
<b>Tag Info</b>	N-terminal 10xHis-tagged
<b>Mol. Weight</b>	57.3 kDa
<b>Protein Length</b>	Full Length
<b>Image</b>	



(Tris-Glycine gel) Discontinuous SDS-PAGE (reduced) with 5% enrichment gel and 15% separation gel.

### Reconstitution

We recommend that this vial be briefly centrifuged prior to opening to bring the contents to the bottom. Please reconstitute protein in deionized sterile water to a concentration of 0.1-1.0 mg/mL. We recommend to add 5-50% of glycerol (final concentration) and aliquot for long-term storage at -20°C/-80°C. Our default final concentration of glycerol is 50%. Customers could use it as reference.

### Shelf Life

The shelf life is related to many factors, storage state, buffer ingredients, storage temperature and the stability of the protein itself. Generally, the shelf life of liquid form is 6 months at -20°C/-80°C. The shelf life of lyophilized form is 12 months at -20°C/-80°C.