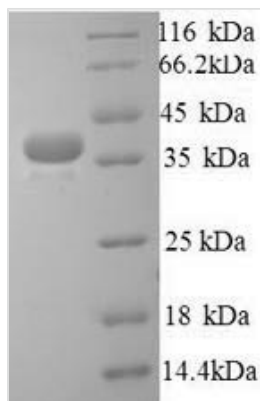




Recombinant Human Talin-1 (TLN1), partial

Product Code	CSB-YP897551HU
Relevance	Probably involved in connections of major cytoskeletal structures to the plasma membrane. High molecular weight cytoskeletal protein concentrated at regions of cell-substratum contact and, in lymphocytes, at cell-cell contacts .
Abbreviation	Recombinant Human TLN1 protein, partial
Storage	The shelf life is related to many factors, storage state, buffer ingredients, storage temperature and the stability of the protein itself. Generally, the shelf life of liquid form is 6 months at -20°C/-80°C. The shelf life of lyophilized form is 12 months at -20°C/-80°C.
Uniprot No.	Q9Y490
Product Type	Recombinant Protein
Immunogen Species	Homo sapiens (Human)
Purity	Greater than 90% as determined by SDS-PAGE.
Sequence	MLDGTVKTIMVDDSKTVTDMLMTICARIGITNHDEYSLVRELMEEKKEEITGTLR KDKTLLRDEKKMEKQKLHTDDELNWLHDHGRTLREQGVEEHETLLLRRKFFY SDQNVDSRDPVQLNLLYVQARDDILNGSHPVVSFDKACEFAGFQCQIQFGPHN EQKHKAGFLDLKDFLPKEYVKQKGERKIFQAHKNCGQMSEIEAKVRYVKLARS LKTYGVSFFLVKEKMKGKNKLVPRLLGITKECVMRVDEKTKEVIQEWNLNLIK WAASPKSFTLDFGDYQDGYYSVQTTEGEQIAQLIAGYIDII
Research Area	Signal Transduction
Source	Yeast
Target Names	TLN1
Protein Names	Recommended name: Talin-1
Expression Region	92-399aa
Notes	Repeated freezing and thawing is not recommended. Store working aliquots at 4°C for up to one week.
Tag Info	N-terminal 6xHis-tagged
Mol. Weight	37.8kDa
Protein Length	Partial
Image	



(Tris-Glycine gel) Discontinuous SDS-PAGE (reduced) with 5% enrichment gel and 15% separation gel.

Reconstitution

We recommend that this vial be briefly centrifuged prior to opening to bring the contents to the bottom. Please reconstitute protein in deionized sterile water to a concentration of 0.1-1.0 mg/mL. We recommend to add 5-50% of glycerol (final concentration) and aliquot for long-term storage at -20°C/-80°C. Our default final concentration of glycerol is 50%. Customers could use it as reference.

Shelf Life

The shelf life is related to many factors, storage state, buffer ingredients, storage temperature and the stability of the protein itself. Generally, the shelf life of liquid form is 6 months at -20°C/-80°C. The shelf life of lyophilized form is 12 months at -20°C/-80°C.