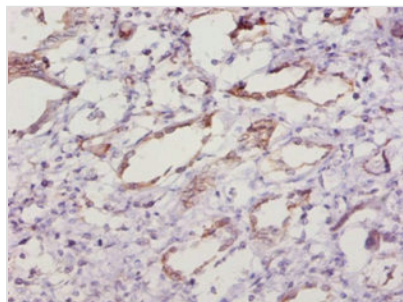




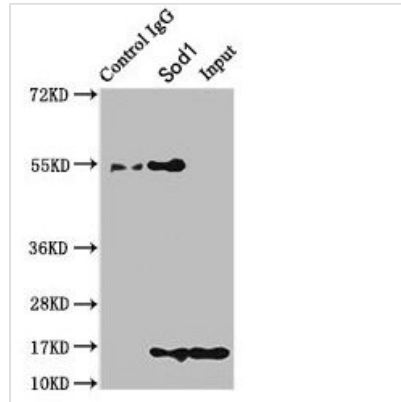
# Sod1 Antibody

<b>Product Code</b>	CSB-PA022397LA01MO
<b>Storage</b>	Upon receipt, store at -20°C or -80°C. Avoid repeated freeze.
<b>Uniprot No.</b>	P08228
<b>Immunogen</b>	Recombinant Mouse Superoxide dismutase [Cu-Zn] protein (2-154AA)
<b>Raised In</b>	Rabbit
<b>Species Reactivity</b>	Mouse, Rat, Human
<b>Tested Applications</b>	ELISA, WB, IHC, IP; Recommended dilution: WB:1:500-1:5000, IHC:1:10-1:100, IP:1:200-1:2000
<b>Form</b>	Liquid
<b>Conjugate</b>	Non-conjugated
<b>Storage Buffer</b>	Preservative: 0.03% Proclin 300 Constituents: 50% Glycerol, 0.01M PBS, PH 7.4
<b>Purification Method</b>	>95%, Protein G purified
<b>Isotype</b>	IgG
<b>Clonality</b>	Polyclonal
<b>Alias</b>	Superoxide dismutase [Cu-Zn] (EC 1.15.1.1), Sod1
<b>Immunogen Species</b>	Mus musculus (Mouse)
<b>Research Area</b>	Signal Transduction
<b>Target Names</b>	Sod1

## Image



Immunohistochemistry of paraffin-embedded human kidney tissue using CSB-PA022397LA01MO at dilution of 1:10



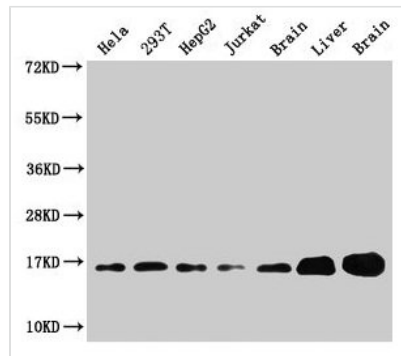
Immunoprecipitating Sod1 in HEK293 whole cell lysate

Lane 1: Rabbit control IgG instead of CSB-PA022397LA01MO in HEK293 whole cell lysate.

For western blotting, a HRP-conjugated Protein G antibody was used as the secondary antibody (1/2000)

Lane 2: CSB-PA022397LA01MO (8μg) + HEK293 whole cell lysate (500μg)

Lane 3: HEK293 whole cell lysate (10μg)



Western Blot

Positive WB detected in: HeLa whole cell lysate, 293T whole cell lysate, HepG2 whole cell lysate, Jurkat whole cell lysate, Rat brain tissue, Rat liver tissue, Mouse brain tissue

All lanes: Sod1 antibody at 3μg/ml

Secondary

Goat polyclonal to rabbit IgG at 1/50000 dilution

Predicted band size: 16 kDa

Observed band size: 16 kDa