

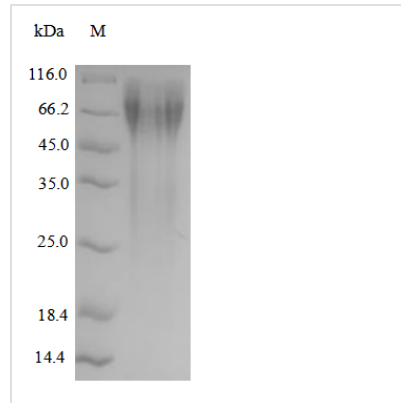


Recombinant Human Nuclear receptor subfamily 4 group A member 2 (NR4A2)

Product Code	CSB-YP016063HU
Relevance	Transcriptional regulator which is important for the differentiation and maintenance of meso-diencephalic dopaminergic (mdDA) neurons during development. It is crucial for expression of a set of genes such as SLC6A3, SLC18A2, TH and DRD2 which are essential for development of mdDA neurons
Abbreviation	Recombinant Human NR4A2 protein
Storage	The shelf life is related to many factors, storage state, buffer ingredients, storage temperature and the stability of the protein itself. Generally, the shelf life of liquid form is 6 months at -20°C/-80°C. The shelf life of lyophilized form is 12 months at -20°C/-80°C.
Uniprot No.	P43354
Product Type	Recombinant Protein
Immunogen Species	Homo sapiens (Human)
Purity	≥ 90% as determined by SDS-PAGE.
Sequence	MPCVQAQYGSSPQGASPASQSYSYHSSGEYSSDFLTPEFVKFSMDLTNTEIT ATTSLPSFSTFMDNYSTGYDVKPPCLYQMPLSGQQSSIKVEDIQMHNYQQHS HLPPQSEEMMPHSGSVYYKPPSSPTPTTPGFQVQHSPMWDDPGSLHNFHQN YVATTHMIEQRKTPVSRLSLFSFKQSPGTPVSSCQMRFDGPLHVPMPNPEPA GSHHVVDGQTFVAVPNPIRKPA SMGFPLQIGHASQLLDTQVPSPPSRGSPSN EGLCAVCGDNAACQHYGVRTCEGCKGFFKRTVQKNAKYVCLANKNCPVDKR RRNRCQYCRFQKCLAVGMVKEVVRTDSLKGRRGRLPSKPKSPQEPSPPSPP VSLISALVRAHVDSNPAMTSLDYSRFQANPDYQMSGDDTQHIQQFYDLLTGS MEIIRGWAEEKIPGFADLPKADQDLLFESAFLELFVLRLAYRSNPVEGKLIFCNGV VLHRLQCVRGFGGEWIDSIVEFSSNLQNMNIDISAFSCIAALAMVTERHGLKEPK RVEELQNKIVNCLKDHVTFNNGGLNRPNYLSKLLGKLPRLTLCTQGLQRIFYL KLEDLVPPPAIIDKFLDTPF
Research Area	Cancer
Source	Yeast
Target Names	NR4A2
Protein Names	Immediate-early response protein NOT Orphan nuclear receptor NURR1 Transcriptionally-inducible nuclear receptor NOT, NURR1, TINUR
Expression Region	1-598aa
Notes	Repeated freezing and thawing is not recommended. Store working aliquots at 4°C for up to one week.
Tag Info	N-terminal 6xHis-tagged
Mol. Weight	68.6 kDa

**Protein Length**

Full Length

Image

(Tris-Glycine gel) Discontinuous SDS-PAGE (reduced) with 5% enrichment gel and 15% separation gel.

Reconstitution

We recommend that this vial be briefly centrifuged prior to opening to bring the contents to the bottom. Please reconstitute protein in deionized sterile water to a concentration of 0.1-1.0 mg/mL. We recommend to add 5-50% of glycerol (final concentration) and aliquot for long-term storage at -20°C/-80°C. Our default final concentration of glycerol is 50%. Customers could use it as reference.

Shelf Life

The shelf life is related to many factors, storage state, buffer ingredients, storage temperature and the stability of the protein itself. Generally, the shelf life of liquid form is 6 months at -20°C/-80°C. The shelf life of lyophilized form is 12 months at -20°C/-80°C.