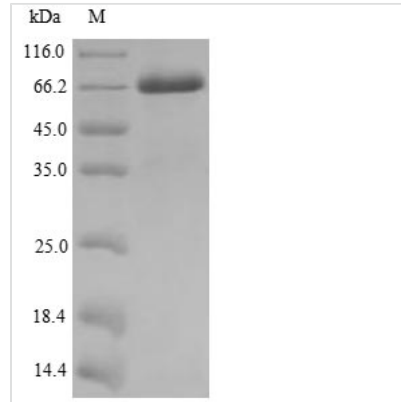




Recombinant Human Melanoma-associated antigen 10 (MAGEA10)

Product Code	CSB-YP013324HU
Relevance	Not known, though may play a role in embryonal development and tumor transformation or aspects of tumor progression.
Abbreviation	Recombinant Human MAGEA10 protein
Storage	The shelf life is related to many factors, storage state, buffer ingredients, storage temperature and the stability of the protein itself. Generally, the shelf life of liquid form is 6 months at -20°C/-80°C. The shelf life of lyophilized form is 12 months at -20°C/-80°C.
Uniprot No.	P43363
Alias	Cancer/testis antigen 1.10
Product Type	Recombinant Protein
Immunogen Species	Homo sapiens (Human)
Purity	≥ 85% as determined by SDS-PAGE.
Sequence	MPRAPKRQRCMPEEDLQSQSETQGLEGAQAPLAVEEDASSSTSTSSSFPSF PSSSSSSSSSSCYPLIPSTPEEVVSADDETPNPPQSAQIACSSPSVVASLPLDQSD EGSSSQKEESPSTLQVLPDSESLPRSEIDEKVTDLVQFLLFKYQMKEPITKAEIL ESVIRNYEDHFPLLFSEASECMLLVFGIDVKEVDPTGHSFVLVTSLGLTYDGML SDVQSMPKTGILILILSIVFIEGYCTPEEVIWEALNMMGLYDGMEHLIYGEPKLL TQDWVQENYLEYRQVPGSDPARYEFLWGPRAHAEIRKMSLLKFLAKVNGSDP RSFPLWYEEALKDEEERAQDRIATTDTTAMASASSSATGSFSYPE
Research Area	Cancer
Source	Yeast
Target Names	MAGEA10
Protein Names	Recommended name: Melanoma-associated antigen 10 Alternative name(s): Cancer/testis antigen 1.10 Short name= CT1.10 MAGE-10 antigen
Expression Region	1-369aa
Notes	Repeated freezing and thawing is not recommended. Store working aliquots at 4°C for up to one week.
Tag Info	N-terminal 6xHis-tagged
Mol. Weight	42.8kDa
Protein Length	Full Length
Image	



(Tris-Glycine gel) Discontinuous SDS-PAGE (reduced) with 5% enrichment gel and 15% separation gel.

Reconstitution

We recommend that this vial be briefly centrifuged prior to opening to bring the contents to the bottom. Please reconstitute protein in deionized sterile water to a concentration of 0.1-1.0 mg/mL. We recommend to add 5-50% of glycerol (final concentration) and aliquot for long-term storage at -20°C/-80°C. Our default final concentration of glycerol is 50%. Customers could use it as reference.

Shelf Life

The shelf life is related to many factors, storage state, buffer ingredients, storage temperature and the stability of the protein itself. Generally, the shelf life of liquid form is 6 months at -20°C/-80°C. The shelf life of lyophilized form is 12 months at -20°C/-80°C.