

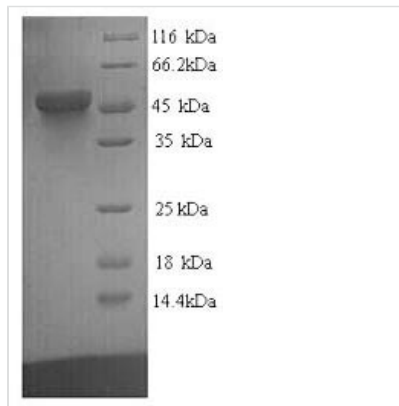


# Recombinant Human Transcriptional enhancer factor TEF-1 (TEAD1)

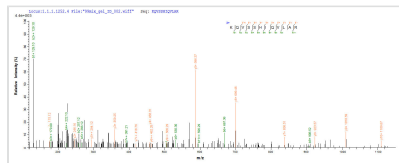
<b>Product Code</b>	CSB-YP023363HU
<b>Relevance</b>	Transcription factor which plays a key role in the Hippo signaling pathway, a pathway involved in organ size control and tumor suppression by restricting proliferation and promoting apoptosis. The core of this pathway is composed of a kinase cascade wherein MST1/MST2, in complex with its regulatory protein SAV1, phosphorylates and activates LATS1/2 in complex with its regulatory protein MOB1, which in turn phosphorylates and inactivates YAP1 oncoprotein and WWTR1/TAZ. Acts by mediating gene expression of YAP1 and WWTR1/TAZ, thereby regulating cell proliferation, migration and epithelial mesenchymal transition (T) induction. Binds specifically and cooperatively to the SPH and GT-IIC 'enhansons' (5'-GTGGAATGT-3') and activates transcription in vivo in a cell-specific manner. The activation function appears to be mediated by a limiting cell-specific transcriptional intermediary factor (TIF). Involved in cardiac development. Binds to the M-CAT motif.
<b>Storage</b>	The shelf life is related to many factors, storage state, buffer ingredients, storage temperature and the stability of the protein itself. Generally, the shelf life of liquid form is 6 months at -20°C/-80°C. The shelf life of lyophilized form is 12 months at -20°C/-80°C.
<b>Uniprot No.</b>	P28347
<b>Alias</b>	NTEF-1;Protein GT-IICTEA domain family member 1 ;TEAD-1Transcription factor 13 ;TCF-13
<b>Product Type</b>	Recombinant Protein
<b>Immunogen Species</b>	Homo sapiens (Human)
<b>Purity</b>	≥ 90% as determined by SDS-PAGE.
<b>Sequence</b>	MEPSSWSGSESPAENMERMSDSADKPIDNDAEGVWSPDIEQSFQEALAIYPP CGRRKIILSDEGKMYGRNELIARYIKLRTGKTRTRKQVSSHQVLARRKSRDFH SKLKDQTAKDQALQHMAAMSSAQIVSATAIHNLGLPGIPRPTFPGAPGFWPG MIQTGQPGSSQDVKPFVQQAYPIQPAVTAPIPGFEPASAPAPSVPAAWQGRSIG TTKLRLVEFSAFLEQQRDPDSYNKHLFVHIGHANHSYSDPLLESVDIRQIYDKF PEKKGGLKELFGKGPQNAFFLVKFWADLNCNIQDDAGAFYGVTSQYESSENM TVTCSTKVCSEFGKQVVEKQVETEARFENGRFVYRINRSPMCEYMINFIHKLKHL PEKYMMNSVLENFTILLVVTNRDTQETLLCMACVFVSNSEHGAAQHHIYRLVK D
<b>Research Area</b>	Cardiovascular
<b>Source</b>	Yeast
<b>Target Names</b>	TEAD1
<b>Protein Names</b>	Recommended name: Transcriptional enhancer factor TEF-1Alternative name(s): NTEF-1 Protein GT-IIC TEA domain family member 1 Short name=


**TEAD-1 Transcription factor 13 Short name= TCF-13**

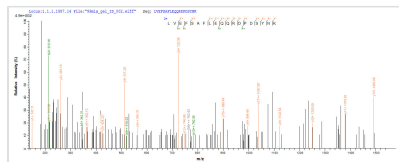
<b>Expression Region</b>	1-426aa
<b>Notes</b>	Repeated freezing and thawing is not recommended. Store working aliquots at 4°C for up to one week.
<b>Tag Info</b>	N-terminal 6xHis-tagged
<b>Mol. Weight</b>	49.9kDa
<b>Protein Length</b>	Full Length

**Image**


(Tris-Glycine gel) Discontinuous SDS-PAGE (reduced) with 5% enrichment gel and 15% separation gel.



Based on the SEQUEST from database of Yeast host and target protein, the LC-MS/MS Analysis result of CSB-YP023363HU could indicate that this peptide derived from Yeast-expressed Homo sapiens (Human) TEAD1.



Based on the SEQUEST from database of Yeast host and target protein, the LC-MS/MS Analysis result of CSB-YP023363HU could indicate that this peptide derived from Yeast-expressed Homo sapiens (Human) TEAD1.

**Reconstitution**

We recommend that this vial be briefly centrifuged prior to opening to bring the contents to the bottom. Please reconstitute protein in deionized sterile water to a concentration of 0.1-1.0 mg/mL. We recommend to add 5-50% of glycerol (final concentration) and aliquot for long-term storage at -20°C/-80°C. Our default final concentration of glycerol is 50%. Customers could use it as reference.

**Shelf Life**

The shelf life is related to many factors, storage state, buffer ingredients, storage temperature and the stability of the protein itself. Generally, the shelf life of liquid form is 6 months at -20°C/-80°C. The shelf life of lyophilized form is 12 months at -20°C/-80°C.