


PRECISION
Intra-assay Precision (Precision within an assay): CV%<8%

Three samples of known concentration were tested twenty times on one plate to assess.

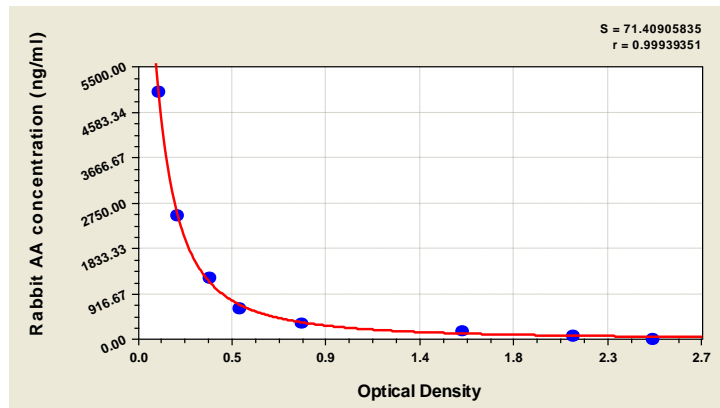
Inter-assay Precision (Precision between assays): CV%<10%

Three samples of known concentration were tested in twenty assays to assess.

Sample	Intra-Assay Precision			Inter-Assay Precision		
	1	2	3	1	2	3
n	20	20	20	20	20	20
Mean(ng/ml)	797.665	765.569	747.589	836.003	835.121	837.112
SD	0.018	0.031	0.040	0.043	0.044	0.042
CV(%)	3.913	6.535	8.573	9.831	9.921	9.735

TYPICAL DATA

These standard curves are provided for demonstration only. A standard curve should be generated for each set of samples assayed.



ng/ml	OD1	OD2	Average
0	2.542	2.432	2.487
78.125	2.110	2.095	2.103
156.25	1.664	1.483	1.573
312.5	0.744	0.851	0.797
625	0.474	0.521	0.498
1250	0.345	0.371	0.358
2500	0.189	0.208	0.198
5000	0.103	0.111	0.107

LOD

69.748ng/ml

LINEARITY

To assess the linearity of the assay, samples were spiked with high concentrations of Rabbit AA in various matrices and diluted with the Sample Diluent to produce samples with values within the dynamic range of the assay.

	Sample	Serum(n=4)
1:10	Average %	97
	Range %	80-108
1:20	Average %	89
	Range %	82-108
1:40	Average %	95
	Range %	89-114
1:80	Average %	99
	Range %	88-110