



PRECISION

Intra-assay Precision (Precision within an assay): CV%<8%

Three samples of known concentration were tested twenty times on one plate to assess.

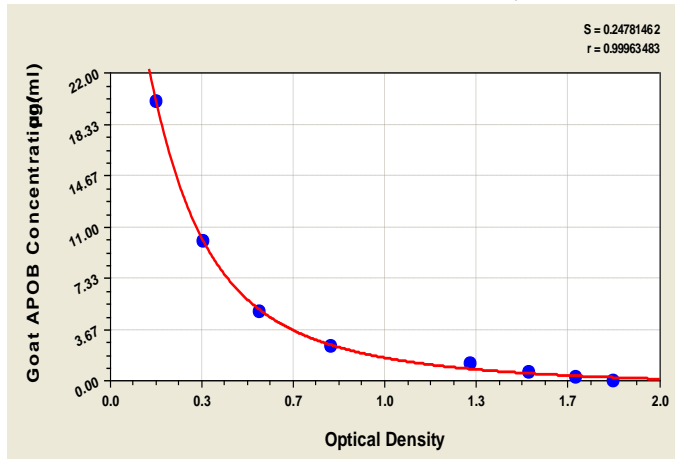
Inter-assay Precision (Precision between assays): CV%<10%

Three samples of known concentration were tested in twenty assays to assess.

Sample	Intra-Assay Precision			Inter-Assay Precision		
	1	2	3	1	2	3
n	20	20	20	20	20	20
Mean(µg/ml)	2.494	2.429	2.464	2.446	2.482	2.412
SD	0.036	0.039	0.035	0.051	0.049	0.057
CV(%)	4.337	4.661	4.201	6.113	5.994	6.876

TYPICAL DATA

These standard curves are provided for demonstration only. A standard curve should be generated for each set of samples assayed.



µg/ml	OD1	OD2	Average
20	0.181	0.187	0.184
10	0.360	0.348	0.354
5	0.547	0.559	0.553
2.5	0.826	0.788	0.807
1.25	1.335	1.277	1.306
0.625	1.504	1.520	1.512
0.313	1.633	1.725	1.679
0	1.791	1.841	1.816

LOD

0.322µg/ml

LINEARITY

To assess the linearity of the assay, samples were spiked with high concentrations of goat APOB in various matrices and diluted with the Sample Diluent to produce samples with values within the dynamic range of the assay.

Sample	Serum(n=4)
1:200	Average %
	95
1:400	Range %
	86-100
1:800	Average %
	99
1:1600	Range %
	91-117
1:3200	Average %
	93
1:6400	Range %
	85-95
1:12800	Average %
	95
1:25600	Range %
	91-98